

QHM-18000-30000

18~30GHz

Features:

- * Low Conversion Loss
- * High Isolation

Applications:

- * Wireless
- * Transceiver
- * Laboratory Test
- * Broadcast

Electrical

RF Frequency:	18~30GHz
IF Frequency:	DC~6GHz
LO Frequency:	10~15GHz
RF/IF Input Power (P1dB):	13dBm
LO Input Power:	6~8dBm
IP3:	22dBm
Conversion Loss:	10~13dB
Isolation (LO~RF):	35dB typ.
Isolation (LO~IF):	30dB typ.
Isolation (RF~IF):	15dB typ.
Current:	100mA max.
Voltage:	+5V

Mechanical

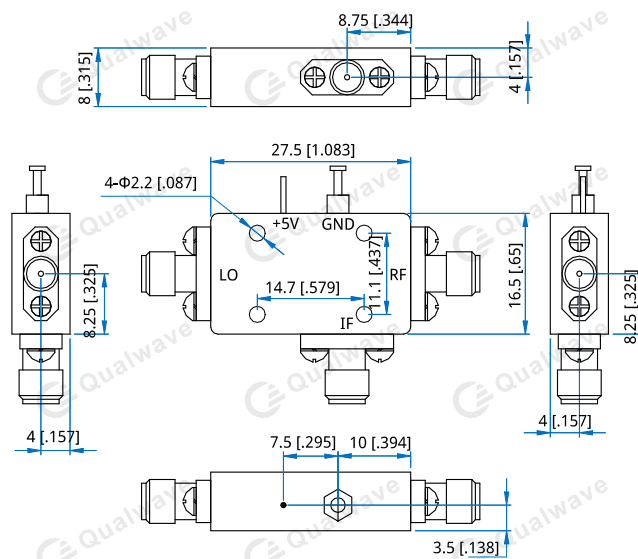
Size*1:	27.5*16.5*8mm 1.083*0.65*0.315in
RF Connectors:	2.92mm Female
LO/IF Connectors:	SMA Female
Mounting:	4-Φ2.2mm through-hole

[1] Exclude connectors.

Environmental

Operating Temperature:	-40~+75°C
------------------------	-----------

Outline Drawings



Unit: mm [in]

Tolerance: ±0.2mm [±0.008in]

How To Order

QHM-18000-30000

Customization is available upon request.