

## QDDC-2000-8000-K1-30-N

2~8GHz, 100W, 30dB

### Features:

\* Low Insertion Loss

### Applications:

\* Amplifiers  
\* Transmitter  
\* Laboratory Test  
\* Radar

### Electrical

Frequency:	2~8GHz
Coupling:	30±1dB
VSWR (Mainline):	1.25 max.
Insertion Loss:	0.5dB max.
Directivity:	15dB min.
Average Power:	100W
Impedance:	50Ω

### Mechanical

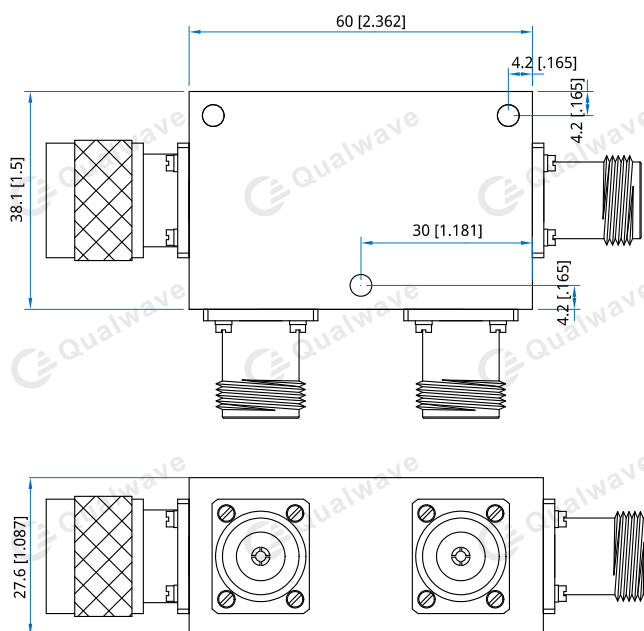
Size <sup>*1</sup> :	60*38.1*27.6mm 2.362*1.5*1.087in
RF In Connectors:	N male
RF Out Connectors:	N female

[1] Exclude connectors

### Environmental

Temperature:	-40~+85°C
--------------	-----------

### Outline Drawings



Unit: mm [in]

Tolerance: ±0.5mm [±0.02in]

### How To Order

**QDDC-2000-8000-K1-30-N**

Customization is available upon request.