

QDC1313TB

High Power, High Isolation

Features:

- * High Power
- * High Isolation
- * Low Insertion Loss
- * Low VSWR

Applications:

- * Wireless
- * Radar
- * Laboratory Test

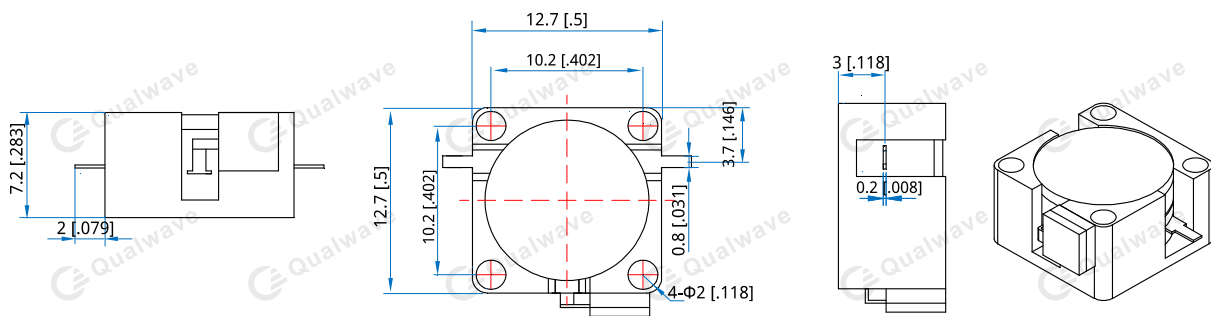
Description

QDC1313TB series Drop-In Circulators cover frequency range 2.11~2.17GHz. High power, high isolation and low insertion loss make it ideal for a lot of applications like amplifiers, transceivers, etc.

Specifications

Frequency (MHz)	Bandwidth (MHz)	Insertion Loss (dB Max.)	Isolation (dB Min.)	VSWR (Max.)	Average Power (W)	Temperature (°C)
2110~2170	60	0.30	20.0	1.25	50	-40~+125

Outline Drawings



Unit: mm [inch] Tolerance: $\pm 0.2\text{mm}$ [$\pm 0.008\text{in}$]

Mechanical

Size*1: 12.7*12.7*7.2mm
0.5*0.5*0.283in
Connector Type: Strip line
Mounting: 4-Φ2mm through-hole

[1] Exclude connectors

Direction Naming Rules:

- 1 - Clockwise
- 2 - Anticlockwise

How To Order

QDC1313TB-W-X-Y-Z

W: Start frequency in MHz

X: Stop frequency in MHz

Y: Average Power in W

Z: Direction type

Examples:

To order a QDC1313TB series Circulator, 2110~2170MHz, 50W, Clockwise, specify QDC1313TB-2110-2170-50-1.

Customization is available upon request.