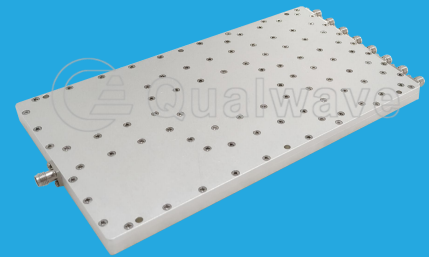


QPD8-1000-8000-K1-S

8-Way, 1~8GHz, 100W

Features:
 * Small Size
 * Low Insertion Loss

Applications:
 * Amplifiers
 * Mixers
 * Antennas
 * Laboratory Test



Electrical

Frequency:	1~8GHz
Insertion Loss ^{*1} :	1.8dB max.
Input VSWR:	1.4 max.
Output VSWR:	1.5 max.
Isolation:	20dB min.
Amplitude Balance:	±0.4dB
Phase Balance:	±3°
Impedance:	50Ω
Power @SUM Port:	100W max. as divider 100W max. as combiner

[1] Excluding theoretical loss 9.0dB.

Mechanical

Size ^{*2} :	186*106*10mm 7.323*4.173*0.394in
Connectors:	SMA Female
Mounting:	6-Φ3.2mm through-hole

[2] Exclude connectors.

Environmental

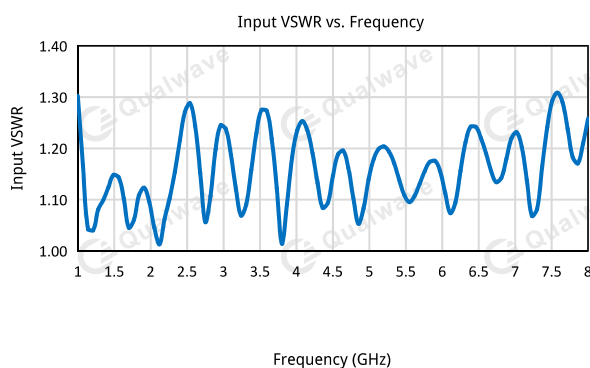
Operation Temperature:	-40~+85°C
------------------------	-----------

How To Order

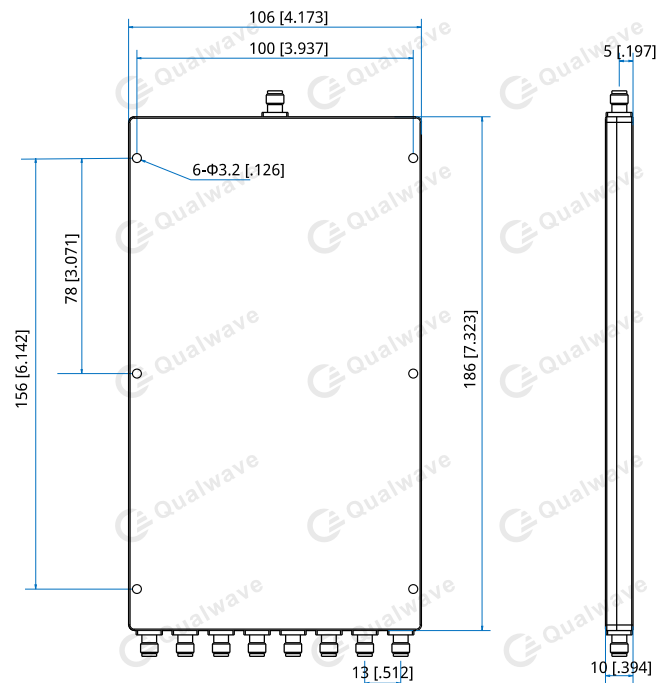
QPD8-1000-8000-K1-S

Customization is available upon request.

Typical Performance Curves

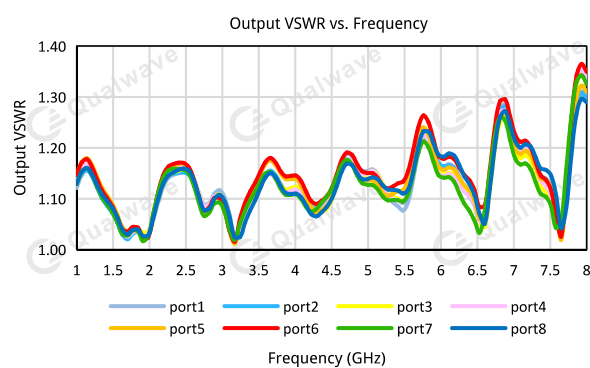


Outline Drawings



Unit: mm [in]

Tolerance: ±0.5mm [±0.02in]



8-Way Power Divider/Combiner

