

QPD8-1000-6000-30

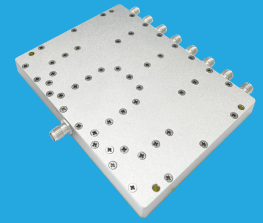
8-Way, 1~6GHz

Features:

- * Small Size
- * Low Insertion Loss

Applications:

- * Amplifiers
- * Mixers
- * Antennas
- * Laboratory Test



Electrical

Frequency:	1~6GHz
Insertion Loss ^{*1} :	1.8dB max.
Input VSWR:	1.3 max.
Output VSWR:	1.2 max.
Isolation:	20dB min.
Amplitude Balance:	±0.1dB
Phase Balance:	±3°
Impedance:	50Ω
Power @SUM Port:	30W max. as divider 2W max. as combiner

[1] Excluding theoretical loss 9dB.

Mechanical

Size ^{*2} :	110*82*10mm 4.331*3.228*0.394in
Connectors ^{*3} :	SMA Female (Passivated Stainless Steel) SMP Male
Mounting:	4-Φ3.2mm through-hole

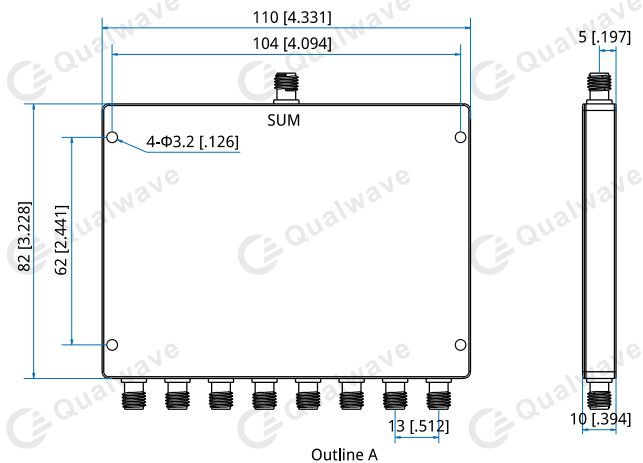
[2] Exclude connectors.

[3] Female connectors can be replaced with male connectors on request.

Environmental

Operation Temperature:	-45~+85°C
Non-operating Temperature:	-55~+125°C

Outline Drawings



Unit: mm [in]

Tolerance: ±0.5mm [±0.02in]

How To Order

QPD8-1000-6000-30-Y

Y: Connector type

Connector naming rules:

S - SMA Female (Outline A)

P - SMP Male

Examples:

To order a 8-way power divider, 1~6GHz, 30W, SMA female, specify QPD8-1000-6000-30-S.

Customization is available upon request.

Typical Performance Curves

SMA

