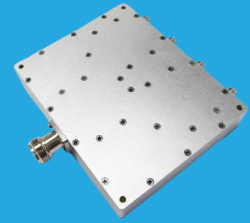


QPD4-1000-2500-K1

4-Way, 1~2.5GHz, 100W

Features:
 * Small Size
 * Low Insertion Loss

Applications:
 * Amplifiers
 * Mixers
 * Antennas
 * Laboratory Test



Electrical

Frequency:	1~2.5GHz
Insertion Loss:	0.5dB max.
Input VSWR:	1.25 max.
Output VSWR:	1.15 max.
Isolation:	20dB min.
Amplitude Balance:	±0.3dB max.
Phase Balance:	±2°
Impedance:	50Ω
Power @SUM Port:	100W max. as divider 100W max. as combiner

Mechanical

Connectors ^{*1} :	SMA Female N Female TNC Female SMP Male
----------------------------	--

[1] Female connectors can be replaced with male connectors on request.

Environmental

Operating Temperature:	-35~+75°C
Non-operating Temperature:	-45~+85°C

How To Order

QPD4-1000-2500-K1-Y

Y: Connector type

Connector naming rules:

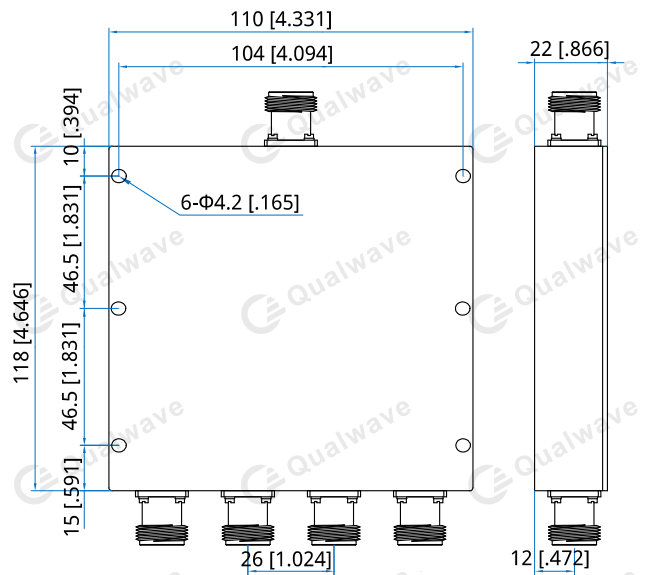
N - N Female (Outline A)
 NS - N Female & SMA Female (Outline B)
 T - TNC Female
 P - SMP Male

Examples:

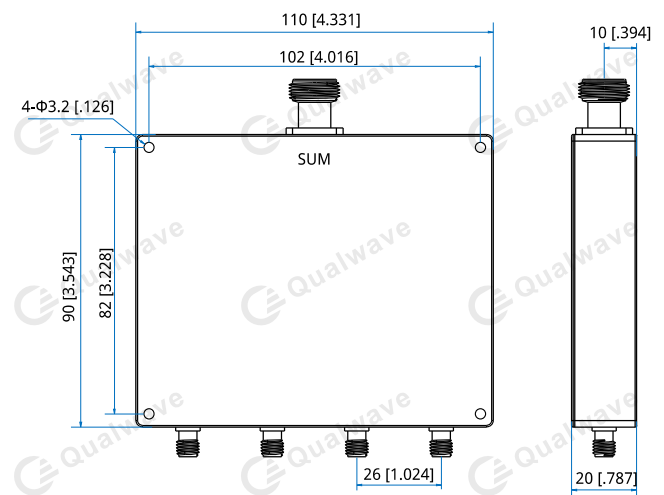
To order a 4-way power divider, 1~2.5GHz, 100W, N female, specify QPD4-1000-2500-K1-N.

Customization is available upon request.

Outline Drawings



Outline A



Outline B

Unit: mm [in]

Tolerance: ±0.5mm [±0.02in]

4-Way Power Dividers/Combiners

Typical Performance Curves

