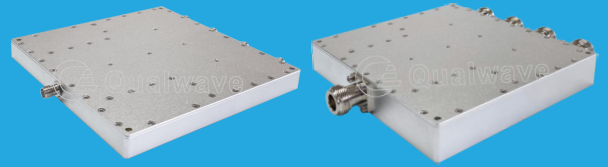


## QPD4-100-2000-30

### 4-Way, 0.1~2GHz

Features:  
 \* Small Size  
 \* Low Insertion Loss

Applications:  
 \* Amplifiers  
 \* Mixers  
 \* Antennas  
 \* Laboratory Test



### Electrical

Frequency:	0.1~2GHz
Insertion Loss*1:	2.4dB max.
Input VSWR:	1.35 max.
Output VSWR:	1.25 max.
Isolation:	19dB min.
Amplitude Balance:	±0.3dB typ.
Phase Balance:	±3° typ.
Impedance:	50Ω
Power @SUM Port:	30W max. as divider 2W max. as combiner

[1] Excluding theoretical loss 6dB.

### Mechanical

Connectors:	SMA Female, N Female, TNC Female
Mounting:	4-Φ3.2mm through-hole

### Environmental

Operation Temperature:	-45~+85°C
Non-operating Temperature:	-55~+125°C

### How To Order

#### QPD4-100-2000-30-X

X: Connector type

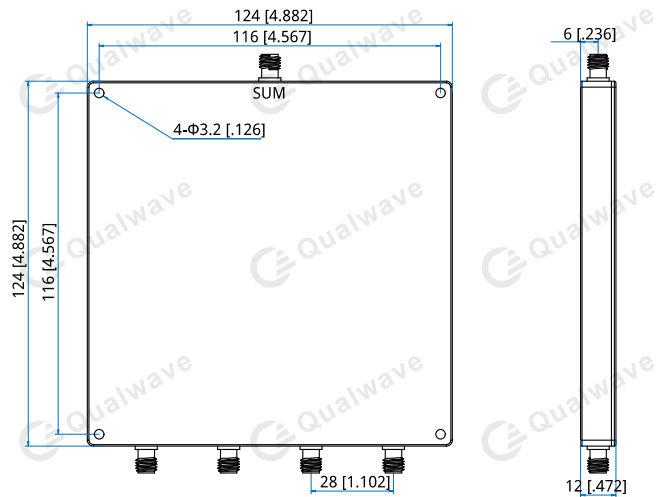
Connector naming rules:  
 S - SMA Female (Outline A)  
 N - N Female (Outline B)  
 T - TNC Female (Outline B)

Examples:

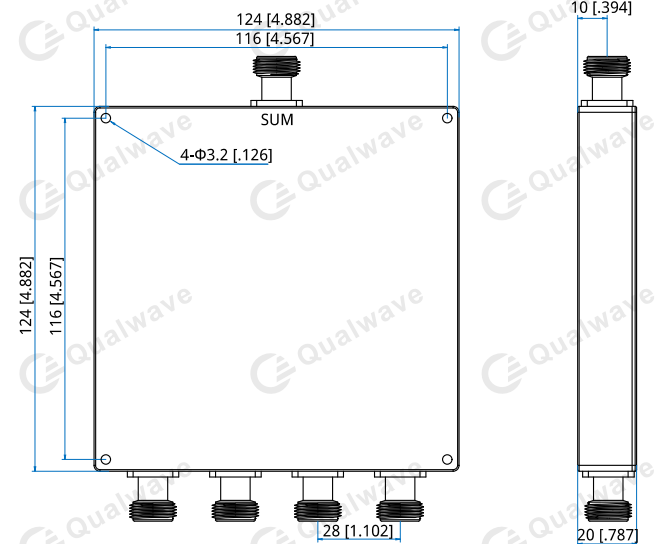
To order a 4-way power divider, 0.1~2GHz, 30W, N female, specify QPD4-100-2000-30-N.

Customization is available upon request.

### Outline Drawings



Outline A

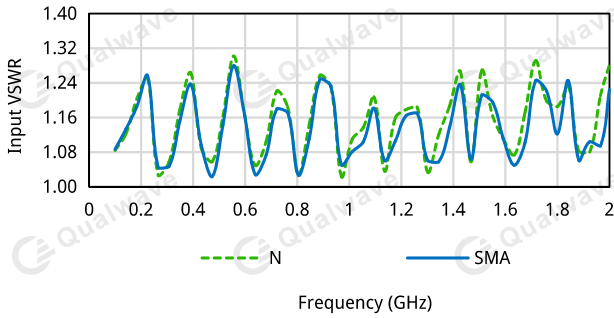


Outline B

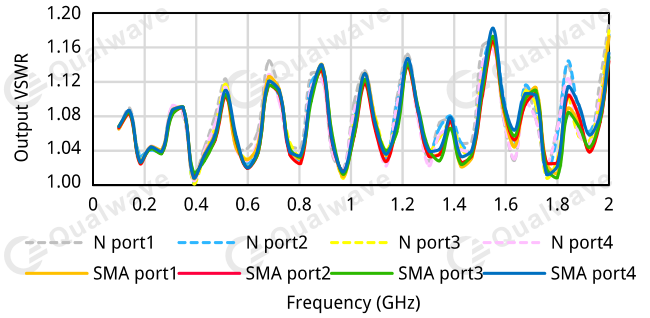
Unit: mm [in]  
 Tolerance: ±0.5mm [±0.02in]

## Typical Performance Curves

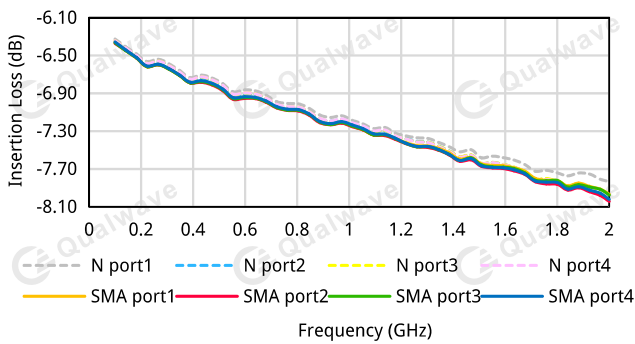
Input VSWR vs. Frequency



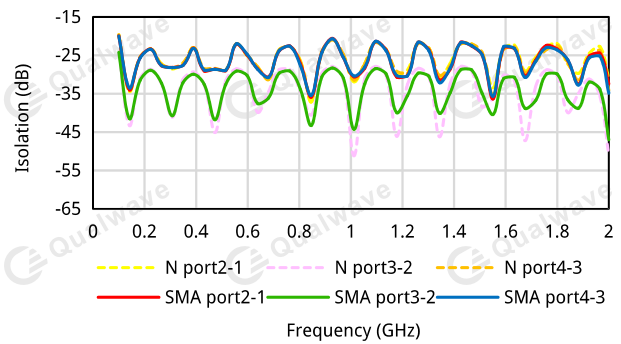
Output VSWR vs. Frequency



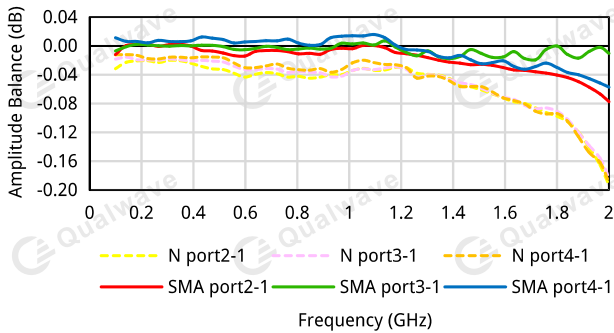
Insertion Loss vs. Frequency



Isolation vs. Frequency



Amplitude Balance vs. Frequency



Phase Balance vs. Frequency

