

QPD2-800-3000-30

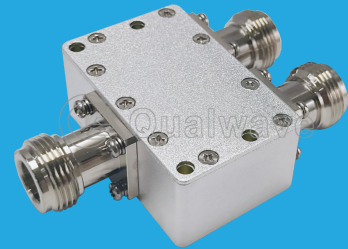
2-Way, 0.8~3GHz

Features:

- * Small Size
- * Low Insertion Loss

Applications:

- * Amplifiers
- * Mixers
- * Antennas
- * Laboratory Test



Electrical

Frequency:	0.8~3GHz
Insertion Loss*1:	0.5dB max.
Input VSWR:	1.25 max.
Output VSWR:	1.2 max.
Isolation:	20dB min.
Amplitude Balance:	±0.2dB
Phase Balance:	±3°
Impedance:	50Ω
Power @SUM Port:	30W max. as divider 2W max. as combiner

[1] Excluding theoretical loss 3.0dB.

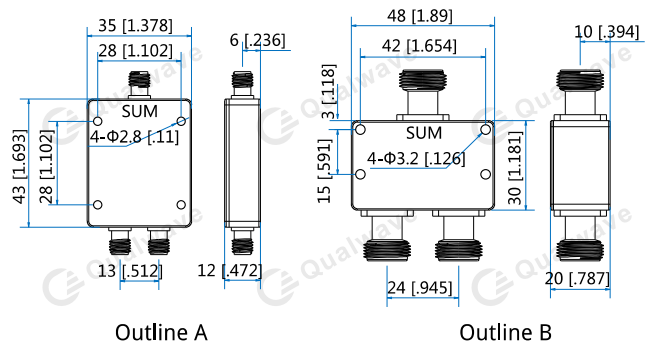
Mechanical

Connectors:	SMA Female, N Female
Mounting:	4-Φ2.8mm through-hole (SMA)
Mounting:	4-Φ3.2mm through-hole (N)

Environmental

Operating Temperature:	-35~+75°C
Non-operating Temperature:	-45~+85°C

Outline Drawings



Unit: mm [in]

Tolerance: ±0.5mm [±0.02in]

How To Order

QPD2-800-3000-30-Y

Y: Connector type

Connector naming rules:

S - SMA Female (Outline A)

N - N Female (Outline B)

Examples:

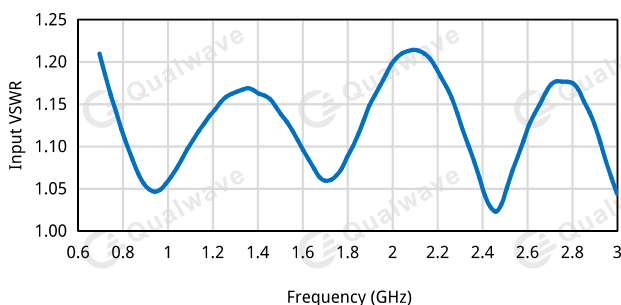
To order a 2-way power divider, 0.8~3GHz, 30W, N female, specify QPD2-800-3000-30-N.

Customization is available upon request.

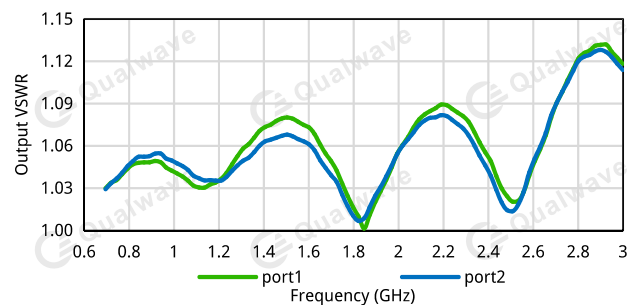
Typical Performance Curves

N

Input VSWR vs. Frequency

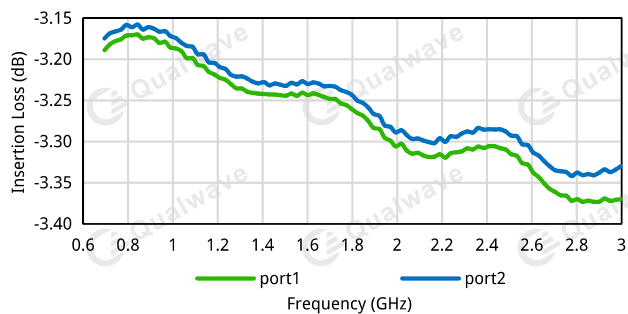


Output VSWR vs. Frequency

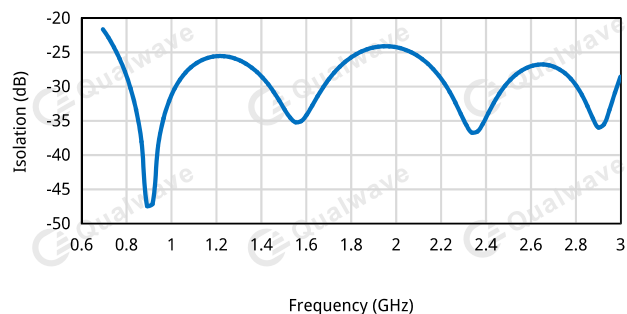


2-Way Power Dividers/Combiners

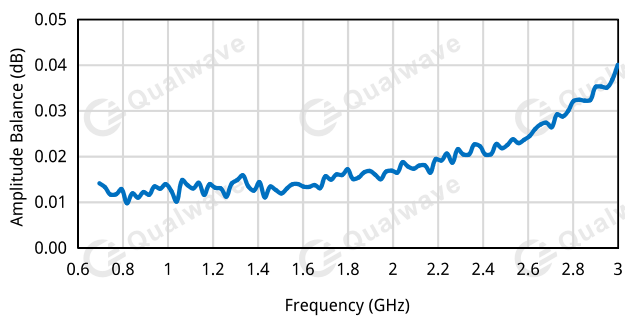
Insertion Loss vs. Frequency



Isolation vs. Frequency



Amplitude Balance vs. Frequency



Phase Balance vs. Frequency

