

QPD2-700-4000-30

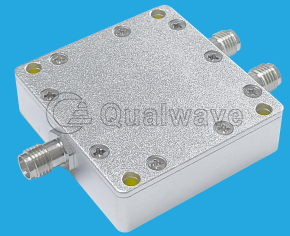
2-Way, 0.7~4GHz

Features:

- * Small Size
- * Low Insertion Loss

Applications:

- * Amplifiers
- * Mixers
- * Antennas
- * Laboratory Test



Electrical

Frequency:	0.7~4GHz
Insertion Loss ^{*1} :	0.6dB max.
Input VSWR:	1.25 max.
Output VSWR:	1.2 max.
Isolation:	20dB min.
Amplitude Balance:	±0.2dB
Phase Balance:	±3°
Impedance:	50Ω
Power @SUM Port:	30W max. as divider 2W max. as combiner

[1] Excluding theoretical loss 3dB.

Mechanical

Connectors:	SMA Female N Female
Mounting:	4-Φ3.2mm through-hole

Environmental

Operation Temperature: -35~+75°C

How To Order

QPD2-700-4000-30-Y

Y: Connector type

Connector naming rules:

S - SMA Female (Outline A)

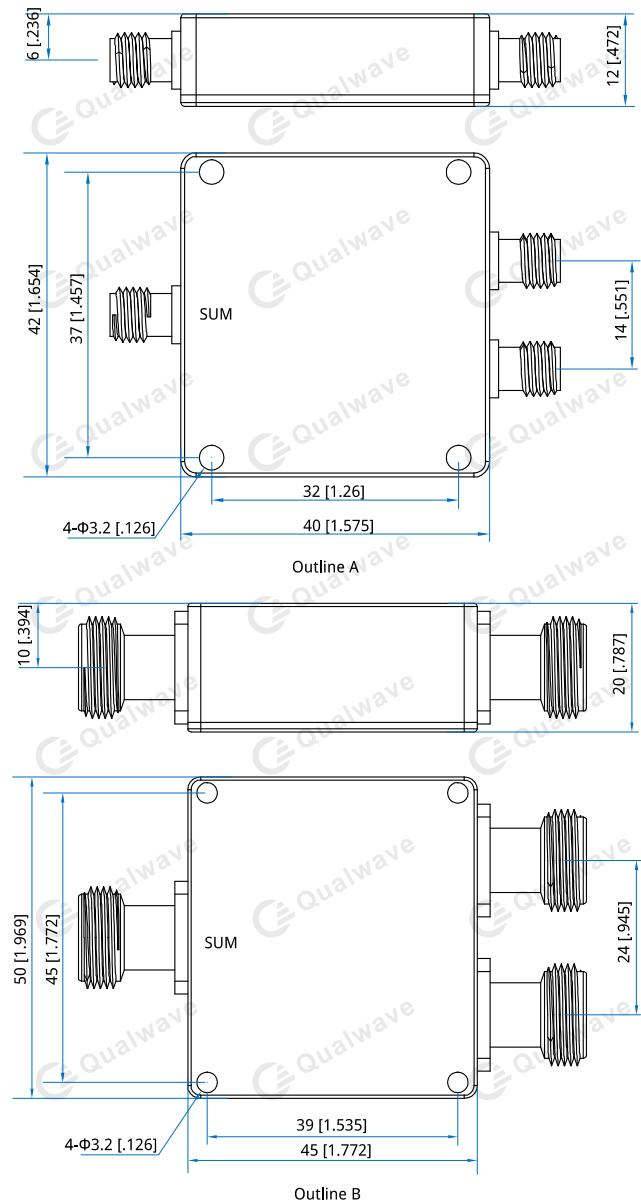
N - N Female (Outline B)

Examples:

To order a 2-way power divider, 0.7~4GHz, 30W, N female, specify QPD2-700-4000-30-N.

Customization is available upon request.

Outline Drawings



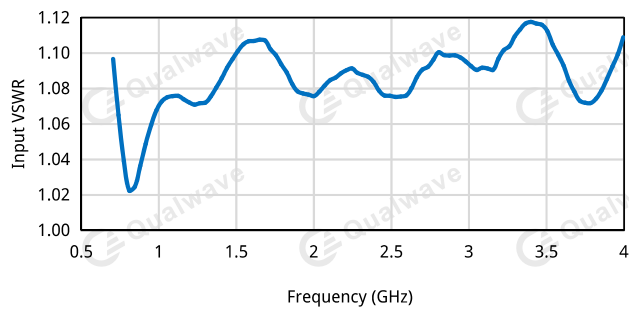
Unit: mm [in]

Tolerance: ±0.5mm [±0.02in]

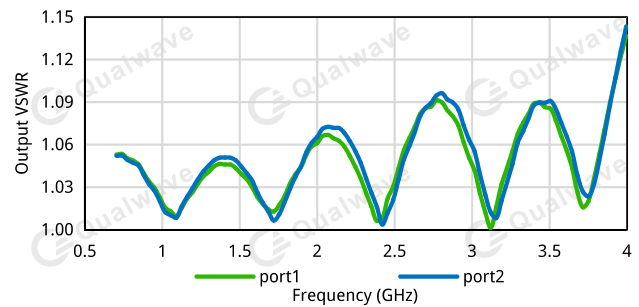
Typical Performance Curves

SMA

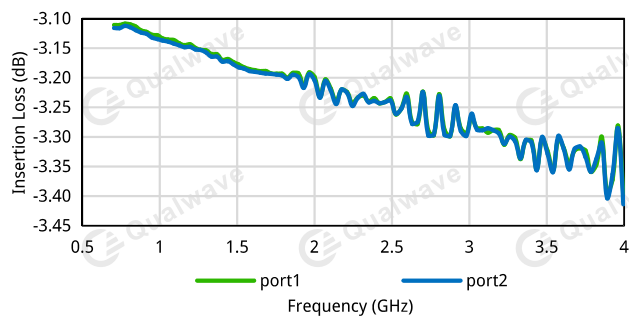
Input VSWR vs. Frequency



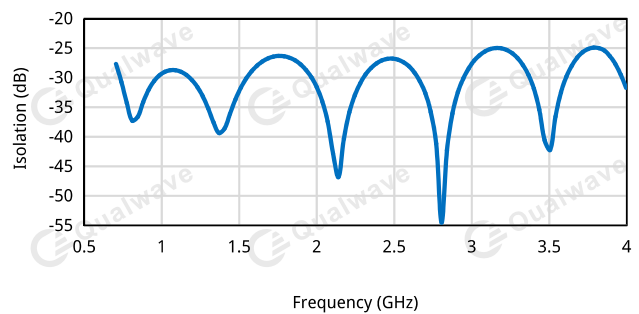
Output VSWR vs. Frequency



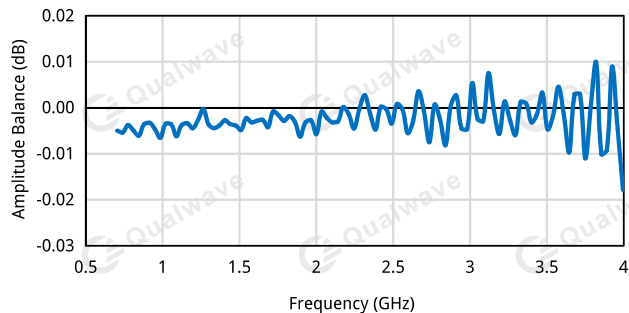
Insertion Loss vs. Frequency



Isolation vs. Frequency



Amplitude Balance vs. Frequency



Phase Balance vs. Frequency

