

### QPD2-200-6000-30

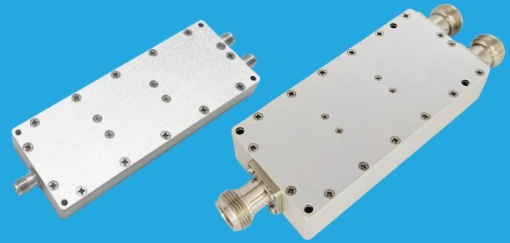
2-Way, 0.2~6GHz

#### Features:

- \* Small Size
- \* Low Insertion Loss

#### Applications:

- \* Amplifiers
- \* Mixers
- \* Antennas
- \* Laboratory Test



#### Electrical

Frequency:	0.2~6GHz
Insertion Loss:	1.7dB max.
Input VSWR:	1.3 max.
Output VSWR:	1.2 max.
Isolation:	19dB min.
Amplitude Balance:	±0.3dB
Phase Balance:	±2°
Impedance:	50Ω
Power @SUM Port:	30W max. as divider 2W max. as combiner

#### Mechanical

Connectors <sup>*1</sup> :	N Female
	SMA Female
	TNC Female
	SMP Male

[1]Female connectors can be replaced with male connectors on request.

#### Environmental

Operating Temperature:	-35~+75°C
Non-operating Temperature:	-45~+85°C

#### How To Order

**QPD2-200-6000-30-Y**

Y: Connector type

Connector naming rules:

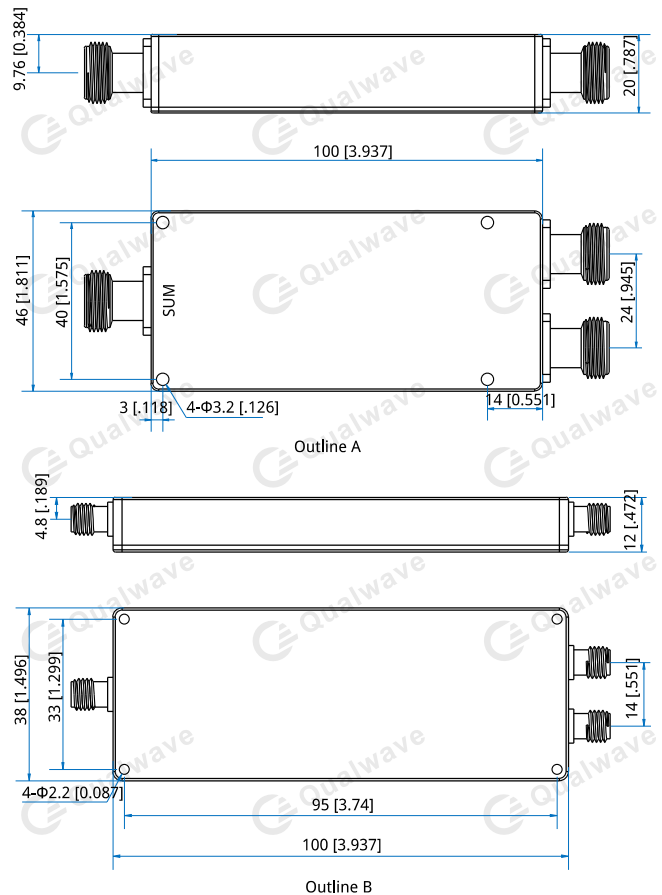
- S - SMA Female (Outline B)
- N - N Female (Outline A)
- T - TNC Female
- P - SMP Male

Examples:

To order a 2-way power divider, 0.2~6GHz, 30W, SMA female, specify QPD2-200-6000-30-S.

Customization is available upon request.

#### Outline Drawings



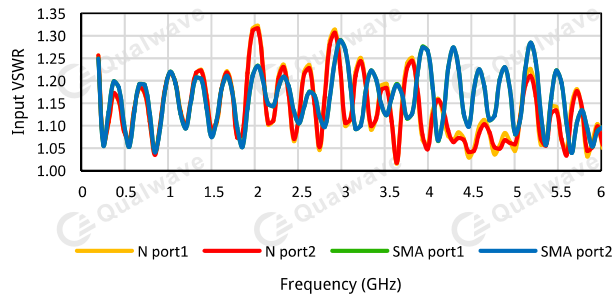
Unit: mm [in]

Tolerance: ±0.5mm [±0.02in]

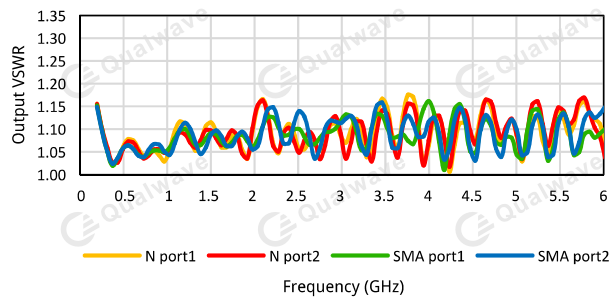
## 2-Way Power Dividers/Combiners

### Typical Performance Curves

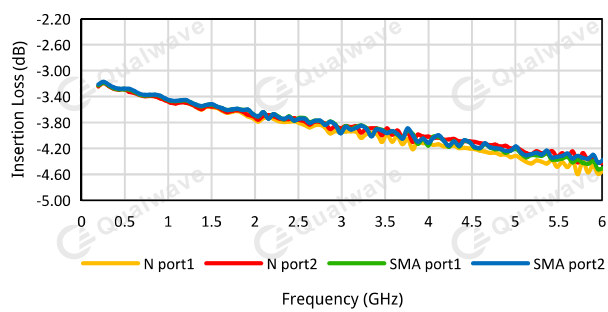
Input VSWR vs. Frequency



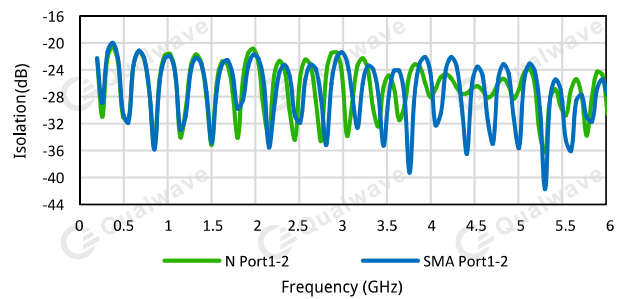
Output VSWR vs. Frequency



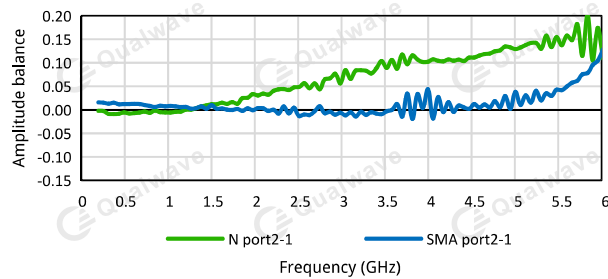
Insertion Loss vs. Frequency



Isolation vs. Frequency



Amplitude balance vs. Frequency



Phase balance vs. Frequency

