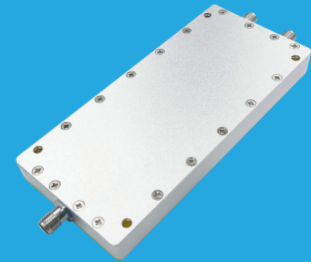


QPD2-100-3000-30

2-Way, 0.1~3GHz

Features:
 * Small Size
 * Low Insertion Loss

Applications:
 * Amplifiers
 * Mixers
 * Antennas
 * Laboratory Test



Electrical

Frequency:	0.1~3GHz
Insertion Loss:	2.1dB max.
Input VSWR:	1.25 max.
Output VSWR:	1.2 max.
Isolation:	20dB min.
Amplitude Balance:	±0.1dB max.
Phase Balance:	±2°
Impedance:	50Ω
Power @SUM Port:	30W max. as divider 2W max. as combiner

Mechanical

Size ^{*1} (SMA):	110*50*11mm 4.331*1.969*0.433in
Connectors ^{*2} :	SMA Female SMP Male
Mounting:	4-Φ3.2mm through-hole

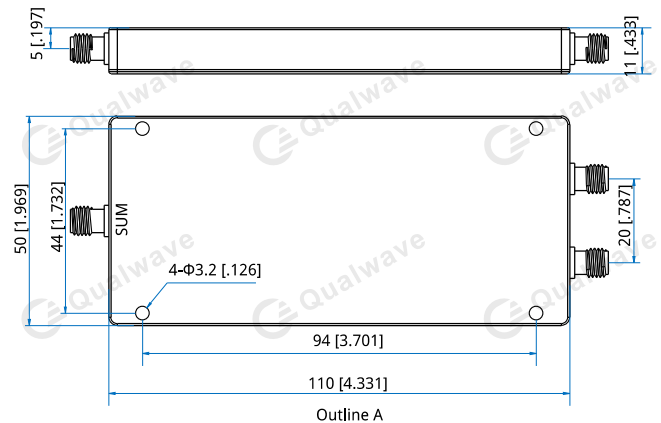
[1] Exclude connectors.

[2] Female connectors can be replaced with male connectors on request.

Environmental

Operation Temperature:	-45~+85°C
Non-operating Temperature:	-55~125°C

Outline Drawings



Unit: mm [in]
 Tolerance: ±0.5mm [±0.02in]

How To Order

QPD2-100-3000-30-Y

Y: Connector type

Connector naming rules:
 S - SMA Female (Outline A)
 P - SMP Male

Examples:

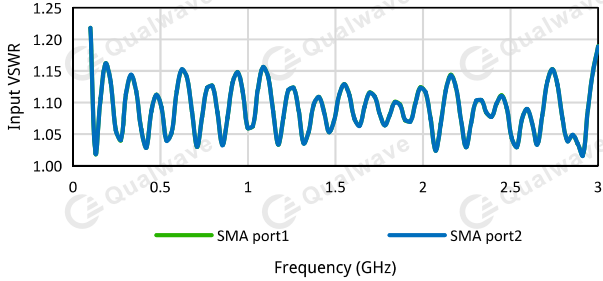
To order a 2-way power divider, 0.1~3GHz, 30W, SMA female, specify QPD2-100-3000-30-S.

Customization is available upon request.

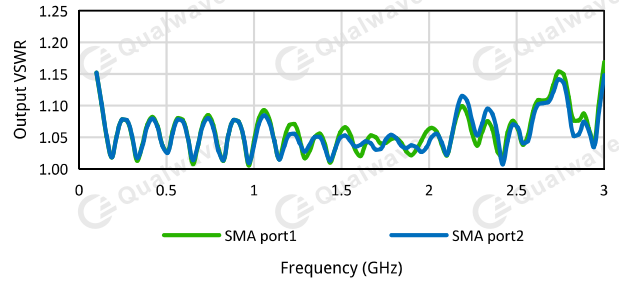
Typical Performance Curves

SMA

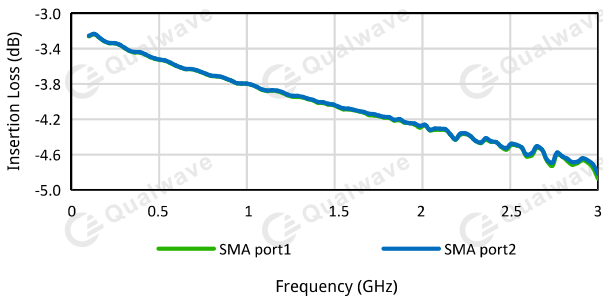
Input VSWR vs. Frequency



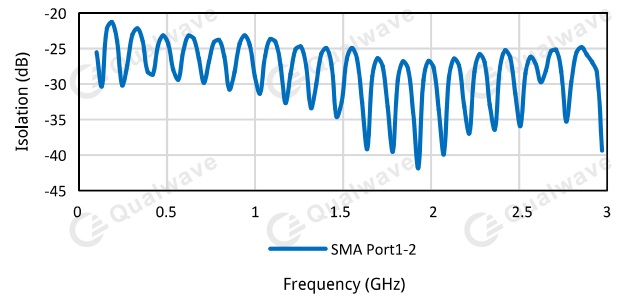
Output VSWR vs. Frequency



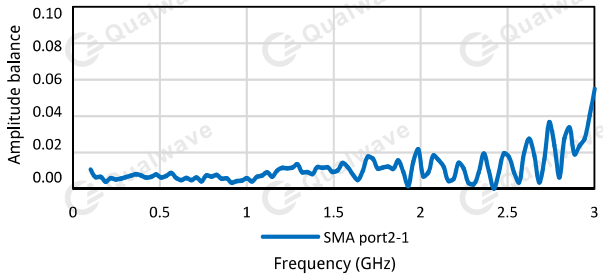
Insertion Loss vs. Frequency



Isolation vs. Frequency



Amplitude balance vs. Frequency



Phase balance vs. Frequency

