

QPD2-0-10000-2-S

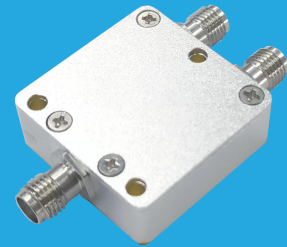
2-Way, DC~10GHz

Features:

- * Small Size
- * Low Insertion Loss

Applications:

- * Amplifiers
- * Mixers
- * Antennas
- * Laboratory Test



Electrical

| | |
|--------------------|-------------|
| Frequency: | DC~10GHz |
| Insertion Loss: | 1.2dB max. |
| Input VSWR: | 1.2 max. |
| Output VSWR: | 1.2 max. |
| Isolation: | 5.9dB min. |
| Amplitude Balance: | ±0.6dB max. |
| Phase Balance: | ±2° |
| Impedance: | 50Ω |
| Average Power: | 2W |

Mechanical

| | |
|----------------------------|-----------------------------------|
| Size ^{*1} : | 28*28*10mm 1.102*1.102*0.394in |
| Connectors ^{*2} : | SMA Female |
| Mounting: | 3-Φ2.8mm through-hole |

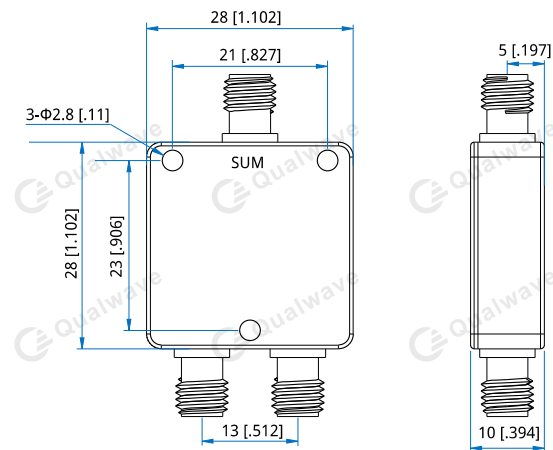
[1] Exclude connectors.

[2] Female connectors can be replaced with male connectors on request.

Environmental

| | |
|----------------------------|-----------|
| Operating Temperature: | -35~+75°C |
| Non-operating Temperature: | -45~+85°C |

Outline Drawings



Unit: mm [in]

Tolerance: ±0.5mm [±0.02in]

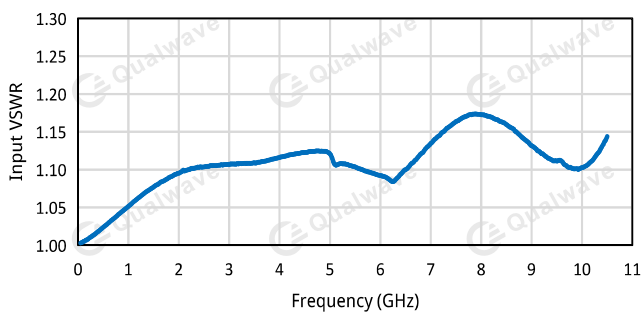
How To Order

QPD2-0-10000-2-S

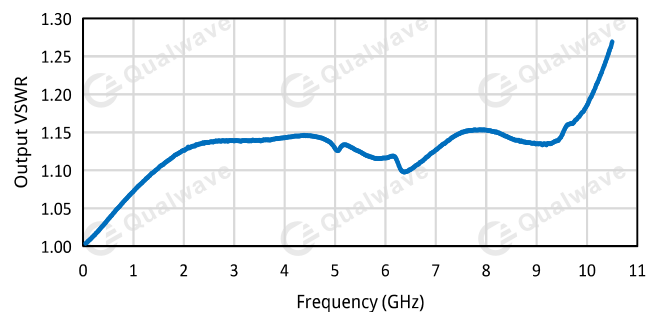
Customization is available upon request.

Typical Performance Curves

Input VSWR vs. Frequency

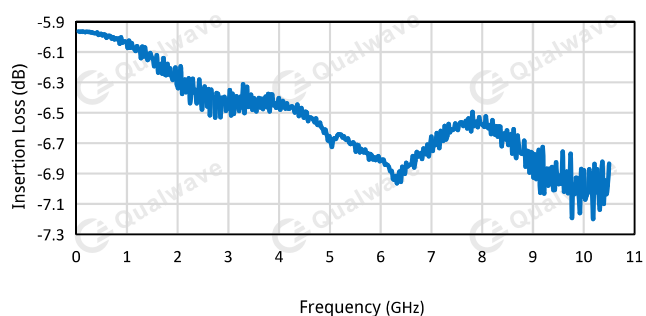


Output VSWR vs. Frequency

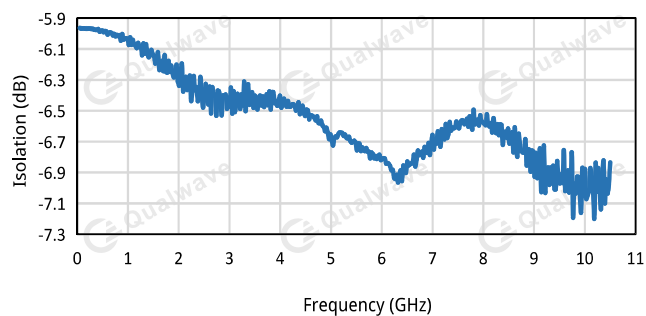


2-Way Resistor Power Divider

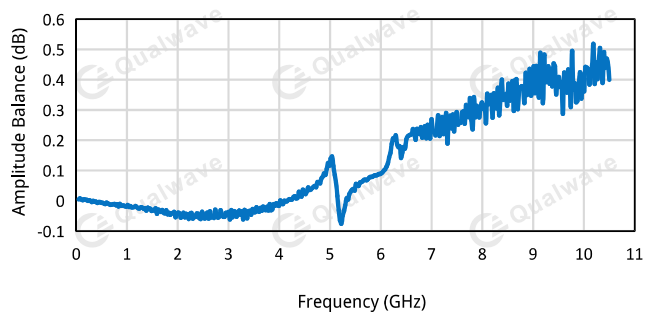
Insertion Loss vs. Frequency



Isolation vs. Frequency



Amplitude Balance vs. Frequency



Phase Balance vs. Frequency

