

QPXO-80-5ET-165

80MHz, External Reference

Features:
* Low phase noise

Applications:
* Wireless
* Transceiver
* Laboratory Test

Electrical

Output Frequency (RF1/RF2):	80MHz
External Reference:	10MHz
Output Power:	5dBm min.
Spurious:	-70dBc max.
Harmonic:	-25dBc max.
Phase Noise:	-90dBc/Hz max.@10Hz -125dBc/Hz max.@100Hz -155dBc/Hz max.@1KHz -165dBc/Hz max.@10KHz -165dBc/Hz max.@100KHz -165dBc/Hz max.@1MHz
Voltage:	+12V DC
Current:	400mA max. (first) 300mA max. (stable)
Impedance:	50Ω

Mechanical

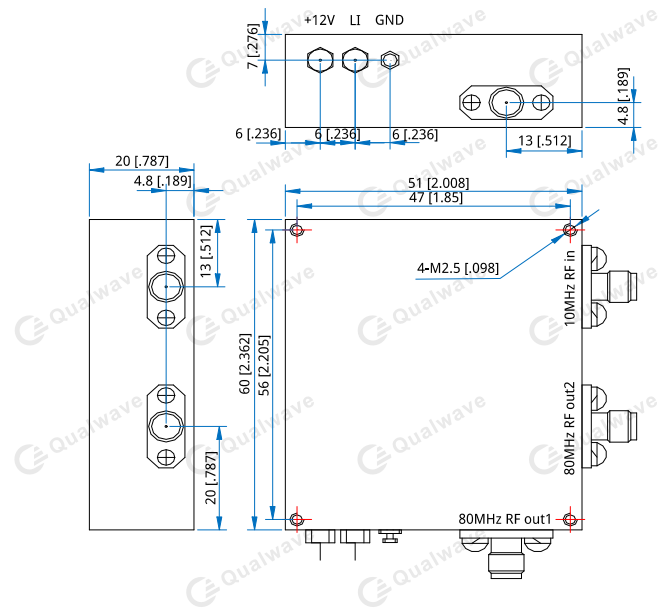
Size ^{*1} :	51*60*20mm 2.008*2.362*0.787in
RF Connectors:	SMA Female
Power Supply Connectors:	Feed Through/Terminal Post
Mounting:	4-M2.5 through-hole

[1] Exclude connectors.

Environmental

Operating Temperature:	-40~+75°C
Non-operating Temperature:	-55~+85°C

Outline Drawings



Unit: mm [in]
Tolerance: ±0.2mm [±0.008in]

How To Order

QPXO-80-5ET-165

Customization is available upon request.

Output Phase Noise

