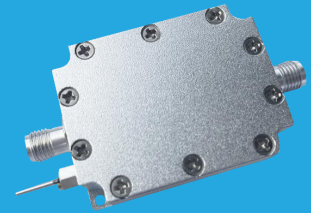


## QLA-600-4200-35-10

600~4200MHz, 35dB, 1.0dB

Features:  
 \* Small Size  
 \* Low Power Consumption

Applications:  
 \* Wireless  
 \* Transmitter  
 \* Laboratory Test



### Electrical

Frequency:	600~4200MHz
Gain:	35dB min.
Gain Flatness:	±2dB max.
Noise Figure:	1.0dB typ.
Output Power (P1dB):	21dBm typ.
Input VSWR:	2.0 typ.
Output VSWR:	2.0 typ.
Voltage:	+5V DC
Impedance:	50Ω

### Absolute Maximum Ratings

RF Input Power:	+22dBm
Voltage:	+7V

### Mechanical

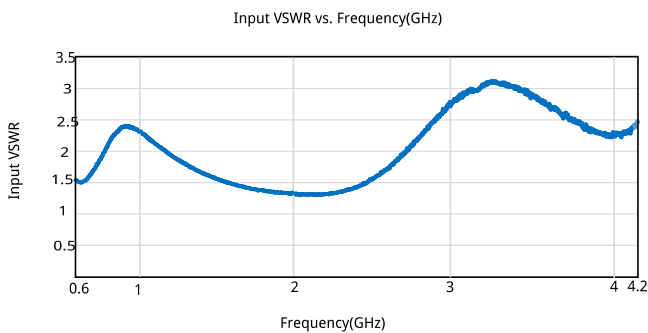
Size*1:	40*30*15mm 1.575*1.181*0.591in
RF Connectors:	SMA female
Power Supply Connectors:	Feed Through/Terminal Post

[1] Exclude connectors.

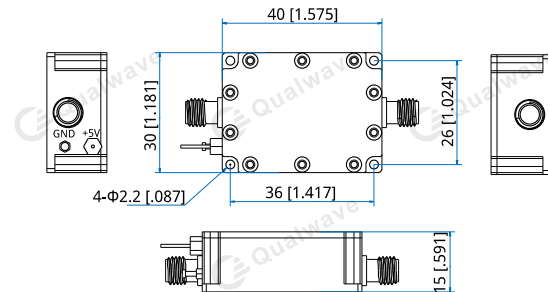
### Environmental

Operating Temperature:	-40~+85°C
Non-operating Temperature:	-55~+150°C

### Typical Performance Curves



### Outline Drawings



Unit: mm [in]  
 Tolerance: ±0.2mm [±0.008in]

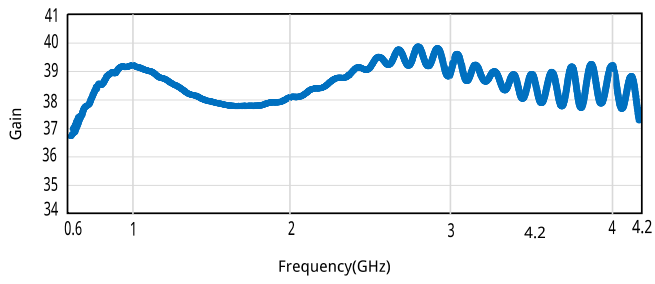
### How To Order

**QLA-600-4200-35-10**

Customization is available upon request.

# Low Noise Amplifier

Gain vs. Frequency(GHz)



Noise Figure(dB) vs. Frequency(GHz)

