

## QLA-5900-7250-30-15

5.9~7.25GHz, 30dB, 1.5dB

Features:  
 \* Broad Band  
 \* Low Noise

Applications:  
 \* Wireless  
 \* Receiver  
 \* Laboratory Test  
 \* Radar



### Electrical

Frequency:	5.9~7.25GHz
Gain:	30dB typ.
Output Power (P1dB):	18dBm typ.
Noise Figure:	1.5dB max.
Input VSWR:	2 typ.
Output VSWR:	3 typ.
Voltage/Current:	+5V/300mA
Impedance:	50Ω

### Absolute Maximum Ratings\*1

RF Input Power:	0dBm
Voltage:	+6V

[1] Permanent damage may occur if any of these limits are exceeded.

### Mechanical

Size*2:	36*32*12mm 1.417*1.26*0.472in
Weight:	30.4g
RF Connectors:	SMA Female
Mounting:	4-Φ2.2mm through-hole

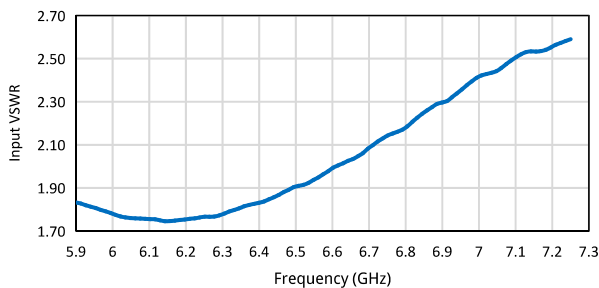
[2] Exclude connectors.

### Environmental

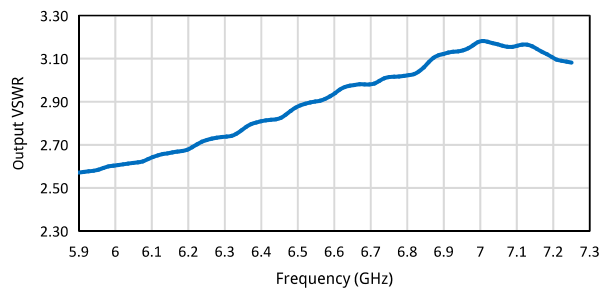
Operating Temperature:	-40~+85°C
Non-operating Temperature:	-55~+150°C

### Typical Performance Curves

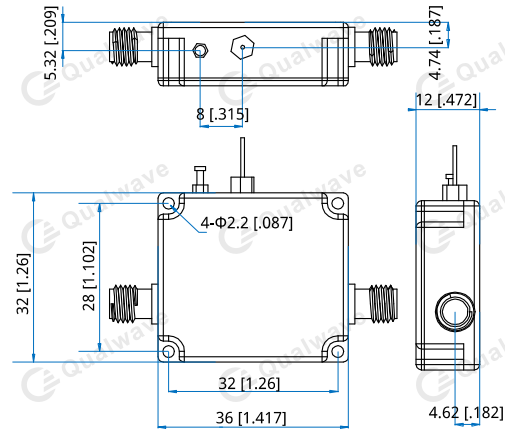
Input VSWR vs. Frequency



Output VSWR vs. Frequency



### Outline Drawings



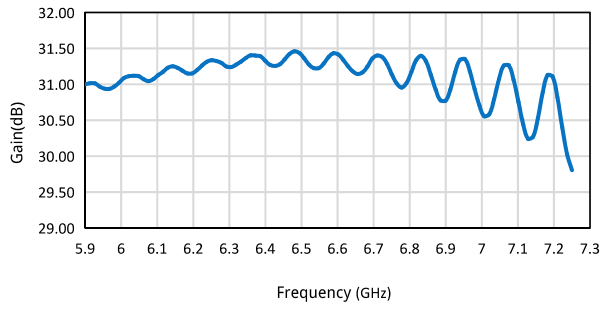
Unit: mm [in]  
 Tolerance: ±0.2mm [±0.008in]

### How To Order

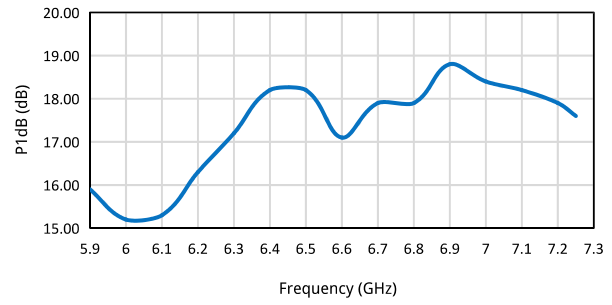
**QLA-5900-7250-30-15**

Customization is available upon request.

Gain vs. Frequency



P1dB vs. Frequency



Noise Figure vs. Frequency

