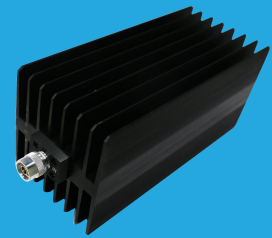


QFA18K2

DC~18GHz, 200W

Features:
 * Low VSWR
 * High Attenuation Flatness

Applications:
 * Wireless
 * Transmitter
 * Laboratory Test
 * Radar



Electrical

Frequency: DC~18GHz
 Attenuation: 10~60dB
 Impedance: 50Ω
 Average Power*1: 200W@25°C max.

[1] Derated linearly to 10W@120°C.

Mechanical

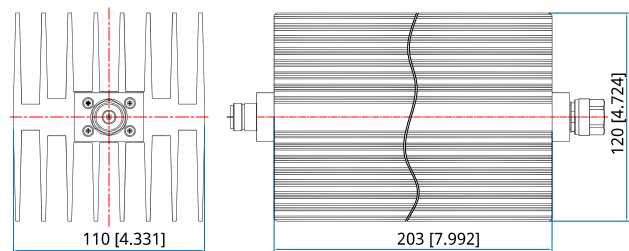
Size*2: 203*120*110mm
 7.992*4.724*4.331in
 RF Connectors: N Male, N Female

[2] Exclude connectors.

Environmental

Temperature: -55~+125°C

Outline Drawings



Unit: mm [in]
 Tolerance: ±2mm [±0.08in]

Attenuation Accuracy and VSWR

Frequency (GHz)	Attenuation Accuracy (±dB) vs. Attenuation (dB)						VSWR (max.)
	10	20	30	40	50	60	
DC~4	0.7	0.7	0.8	0.9	0.9	0.9	1.20
DC~8	0.8	0.8	0.9	0.9	0.9	0.9	1.25
DC~12.4	0.9	0.9	1.0	1.1	1.1	1.1	1.35
DC~18	2.0	-	1.5	1.3	1.4	1.4	1.45

How To Order

QFA18K2-X-Y-Z

X: Frequency in GHz
 Y: Attenuation in dB
 Z: Connector type

Connector naming rules:
 N - N

Examples:

To order an attenuator, DC-18GHz, N male to N female, 30dB attenuation, specify QFA18K2-18-30-N.