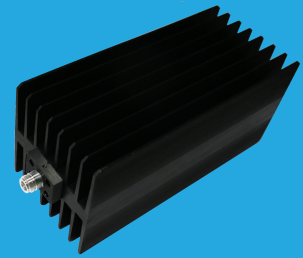


QCT18K5

DC~18GHz, 500W

Features:
 * Low VSWR
 * Broadband

Applications:
 * Transmitters
 * Antennas
 * Laboratory Test
 * Impedance Matching



Electrical

Frequency Range: DC~18GHz
 Average Power^{*1}: 500W@25°C
 Impedance: 50Ω

[1] Derated linearly to 25W@120°C.

VSWR

Frequency (GHz)	VSWR (max.)
DC~4	1.2
DC~8	1.25
DC~12.4	1.35
DC~18	1.6

Mechanical

Size^{*2}: 509*120*110mm
 20.039*4.724*4.331in

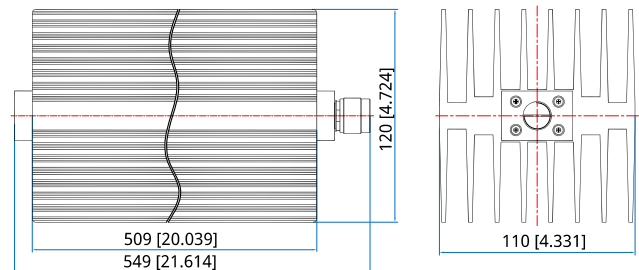
Connector: N

[2] Exclude connectors.

Environmental

Temperature: -55~+125°C

Outline Drawings



Unit: mm [in]
 Tolerance: ±1mm [±0.04in]

How To Order

QCT18K5-X-Y

X: Frequency in GHz

Y: Connector type

Connector naming rules:

N - N male

NF - N female

Examples:

To order a termination, DC-12.4GHz, N male, specify
 QCT18K5-12.4-N

Customization is available upon request.