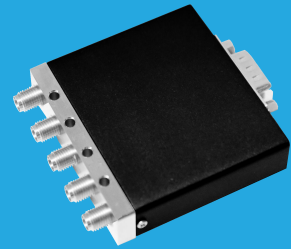


QMSD3S DC~18GHz, 2P3T

Features:
 * High Power
 * Long Operation Life

Applications:
 * Wireless
 * Transmitter
 * Laboratory Test
 * Radar



Electrical

Frequency:		DC~18GHz			
Impedance:		50Ω			
Frequency range (GHz)	Insertion Loss (dB)	Isolation (dB)	VSWR		
DC~6	0.2	70	1.2		
6~12	0.25	70	1.3		
12~18	0.4	60	1.4		
Voltage (V)		+12	+18	+24	+28
Current (mA)	Failsafe	380	280	200	170
	Latching	400	240	180	230

Mechanical

Size*1: 58*L*15mm
 2.283*L*0.591in

Weight: 98g

Switching Sequence: Break before Make

Switching Time: 15mS max.

Operation Life: 1M Cycles

Vibration (operating): 20-2000Hz, 10G RMS

Mechanical Shock (non-operating): 50G, 1/2sine, 11mS

RF Connectors: SMA Female

Power Supply & Control Interface Connectors: Feed Through/Terminal Post or D-Sub 9

Mounting: 4-Φ3.2mm through-hole

[1] Exclude connectors.

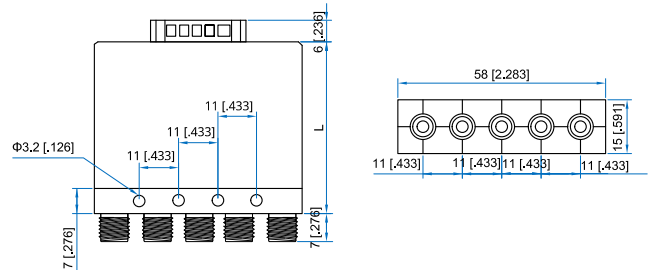
Pin Numbering

Pin	Function	Pin	Function
1	V1/A1 (1-3, 2-4)	5~6	Indicator (1~2)
2	V2/A2 ((1-2, 3-4, Latching Only)	7	COM (Indicator)
3	COM	9	V (TTL or Indicator)
4/8	NA		

Environmental

Temperature: -25~+65°C
 Extended Temperature: -55~+85°C

Outline Drawings



Height (L)	Standard	TTL	Indicator
mm	47	53	60
in	1.85	2.09	2.36

Unit: mm [in]

Tolerance: ±0.5mm [±0.02in]

Additional Options

TTL: T Indicators: I Extended Temperature: Z

How To Order

QMSD3S-F-WXYZ

F: Frequency in GHz

W: Actuator Type. Failsafe: 0, Latching: 1.

X: Voltage. +12V: E, +18V: H, +24V: K, +28V: M.

Y: Power Interface. Pin: 0, D-Sub: 1.

Z: Additional Options.

Examples:

To order a 2P3T switch, DC-18GHz, Failsafe, +12V, D-Sub, TTL, Indicators, specify QMSD3S-18-0E1TI.

Customization is available upon request.