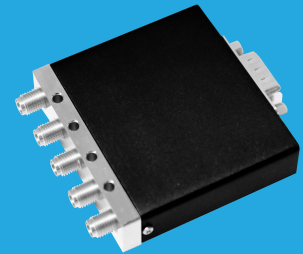


QMSD3K DC~40GHz, 2P3T

Features:
* High Power
* Long Operation Life

Applications:
* Wireless
* Transmitter
* Laboratory Test
* Radar



Electrical

Frequency: DC~40GHz
Impedance: 50Ω

Frequency range (GHz)	Insertion Loss (dB)	Isolation (dB)	VSWR	
DC~6	0.2	70	1.2	
6~12	0.25	70	1.3	
12~18	0.4	60	1.4	
18~26.5	0.7	55	1.7	
26.5~32	0.8	50	1.9	
32~40	1	50	2	

Voltage (V)	+12	+18	+24	+28
Current (mA) Failsafe	380	280	200	170
Latching	400	240	180	230

Mechanical

Size*1: 58*L*15mm
2.283*L*0.591in

Weight: 98g

Switching Sequence: Break before Make

Switching Time: 15mS max.

Operation Life: 1M Cycles

Vibration (operating): 20-2000Hz, 10G RMS

Mechanical Shock (non-operating): 50G, 1/2sine, 11mS

RF Connectors: 2.92mm Female

Power Supply & Control Interface Connectors: Feed Through/Terminal Post or D-Sub 9

Mounting: 4-Φ3.2mm through-hole

[1] Exclude connectors.

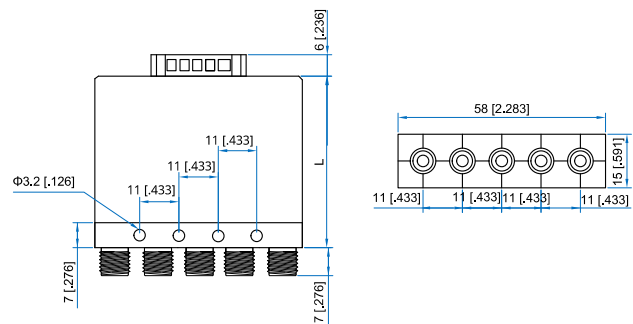
Pin Numbering

Pin	Function	Pin	Function
1	V1/A1 (1-3, 2-4)	5~6	Indicator (1~2)
2	V2/A2 ((1-2, 3-4, Latching Only)	7	COM (Indicator)
3	COM	9	V (TTL or Indicator)
4/8	NA		

Environmental

Temperature: -25~+65°C
Extended Temperature: -55~+85°C

Outline Drawings



Height (L)	Standard	TTL	Indicator
mm	47	53	60
in	1.85	2.09	2.36

Unit: mm [in]

Tolerance: ±0.5mm [±0.02in]

Additional Options

TTL: T

Indicators: I

Extended Temperature: Z

How To Order

QMSD3K-F-WXYZ

F: Frequency in GHz

W: Actuator Type. Failsafe: 0, Latching: 1.

X: Voltage. +12V: E, +18V: H, +24V: K, +28V: M.

Y: Power Interface. Pin: 0, D-Sub: 1.

Z: Additional Options.

Examples:

To order a 2P3T switch, DC-40GHz, Failsafe, +12V, D-Sub, TTL, Indicators, specify QMSD3K-40-0E1TI.

Customization is available upon request.