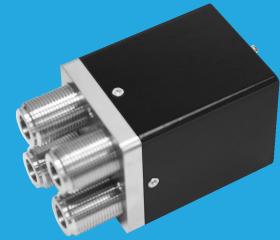


# QMSD2N

## DC~12.4GHz, DPDT

Features:  
 \* High Power  
 \* Long Operation Life

Applications:  
 \* Wireless  
 \* Transmitter  
 \* Laboratory Test  
 \* Radar



### Electrical

Frequency:		DC~12.4GHz			
Impedance:		50Ω			
Frequency range (GHz)	Insertion Loss (dB)	Isolation (dB)	VSWR		
DC~2	0.2	80	1.15		
2~4	0.25	70	1.2		
4~12.4	0.5	50	1.5		
Voltage (V)		+12	+18	+24	+28
Current (mA)	Failsafe	550	370	270	240
	Latching	310	280	240	180

### Mechanical

Size*1:	63*44*44mm 2.48*1.732*1.732in
Weight:	350g
Switching Sequence:	Break before Make
Switching Time:	15mS max.
Operation Life:	1M Cycles
Vibration (operating):	20-2000Hz, 10G RMS
Mechanical Shock (non-operating):	50G, 1/2sine, 11mS
RF Connectors:	N Female
Power Supply & Control Interface Connectors:	Feed Through/Terminal Post or D-Sub 9
Mounting:	4-M3, depth 6mm

[1] Exclude connectors.

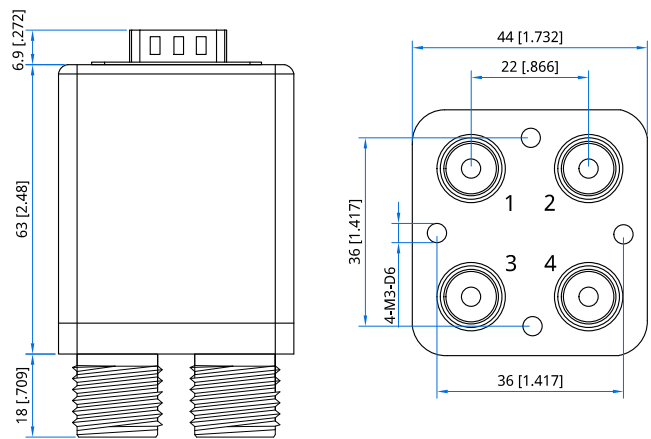
### Pin Numbering

Pin	Function	Pin	Function
1	V1/A1 (1-3, 2-4)	5~6	Indicator (1~2)
2	V2/A2 ((1-2, 3-4, Latching Only)	7	COM (Indicator)
3	COM	9	V (TTL Only)
4/8	NA		

### Environmental

Temperature:	-25~+65°C
Extended Temperature:	-55~+85°C

### Outline Drawings



Unit: mm [in]  
 Tolerance: ±0.5mm [±0.02in]

### Additional Options

TTL: T      Indicators: I      Extended Temperature: Z

### How To Order

#### QMSD2N-F-WXYZ

F: Frequency in GHz  
 W: Actuator Type. Failsafe: 0, Latching: 1.  
 X: Voltage. +12V: E, +18V: H, +24V: K, +28V: M.  
 Y: Power Interface. Pin: 0, D-Sub: 1.  
 Z: Additional Options.

### Examples:

To order a DPDT switch, DC-6GHz, Latching, +12V, D-Sub, TTL, Indicators, specify QMSD2N-6-1E1TI.

Customization is available upon request.