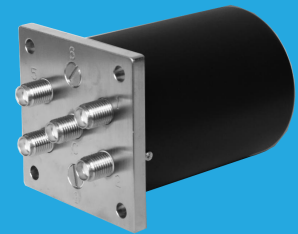


QMS6S

DC~18GHz, SP3T~SP6T

Features:
 * High Power
 * Long Operation Life

Applications:
 * Wireless
 * Transmitter
 * Laboratory Test
 * Radar



Electrical

| Frequency: | DC~18GHz | | | | |
|-----------------------|---------------------|----------------|------|-----|-----|
| Impedance: | 50Ω | | | | |
| Frequency range (GHz) | Insertion Loss (dB) | Isolation (dB) | VSWR | | |
| DC~6 | 0.3 | 70 | 1.3 | | |
| 6~12 | 0.4 | 60 | 1.4 | | |
| 12~18 | 0.5 | 60 | 1.5 | | |
| Voltage (V) | +12 | +18 | +24 | +28 | |
| Current (mA) | Normally Open | 290 | 190 | 150 | 140 |

Mechanical

| | | | | |
|--|------------------------------|--|--|--|
| Size*1: | 45*L*45mm 1.772*L*1.772in | | | |
| Weight: | 190g | | | |
| Switching Sequence: | Break before Make | | | |
| Switching Time: | 15mS max. | | | |
| Operation Life: | 1M Cycles | | | |
| Vibration (operating): | 20-2000Hz, 10G RMS | | | |
| Mechanical Shock (non-operating): | 50G, 1/2sine, 11mS | | | |
| RF Connectors: | SMA Female | | | |
| Power Supply & Control Interface Connectors: | D-Sub 15 | | | |
| Mounting: | 4-Φ3.8mm through-hole | | | |

[1] Exclude connectors.

Pin Numbering

| Pin | Function | Pin | Function |
|------|-----------------|-----|----------------------|
| 1~6 | V1~V6/A1~A6 | 14 | COM (Indicator) |
| 7 | COM | 15 | V (TTL or Indicator) |
| 8~13 | Indicator (1~6) | | |

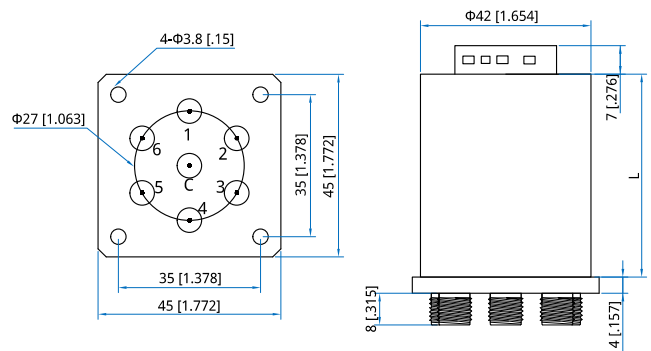
Port

| | | | |
|------|----------|------|-----|
| SP3T | 1, 3, 5 | SP5T | 1~5 |
| SP4T | 1~2, 4~5 | SP6T | 1~6 |

Environmental

| | |
|-----------------------|-----------|
| Temperature: | -25~+65°C |
| Extended Temperature: | -55~+85°C |

Outline Drawings



| Height (L) | Standard | TTL |
|------------|----------|------|
| mm | 62 | 72 |
| in | 2.44 | 2.84 |

Unit: mm [in]

Tolerance: ±0.5mm [±0.02in]

Additional Options

TTL: T Indicators: I Extended Temperature: Z

How To Order

QMSVS-F-WXYZ

V: 3~6 (SP3T~SP6T)

F: Frequency in GHz

W: Actuator Type. Normally Open: 3.

X: Voltage. +12V: E, +18V: H, +24V: K, +28V: M.

Y: Power Interface. D-Sub: 1.

Z: Additional Options.

Examples:

To order a SP4T switch, DC-18GHz, Normally Open, +12V, D-Sub, TTL, Indicators, specify QMS4S-18-3E1TI.

Customization is available upon request.