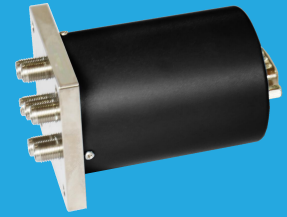


QMS6K

DC~40GHz, SP3T~SP6T

Features:
 * High Power
 * Long Operation Life

Applications:
 * Wireless
 * Transmitter
 * Laboratory Test
 * Radar



Electrical

Frequency:	DC~40GHz			
Impedance:	50Ω			
Frequency range (GHz)	Insertion Loss (dB)	Isolation (dB)	VSWR	
DC~6	0.3	70	1.3	
6~12	0.4	60	1.4	
12~18	0.5	60	1.5	
18~26.5	0.8	50	1.9	
26.5~40	1	50	2	
Voltage (V)	+12	+18	+24	+28
Current (mA)	Normally Open	270	180	150

Mechanical

Size*1:	45*L*45mm 1.772*L*1.772in			
Weight:	190g			
Switching Sequence:	Break before Make			
Switching Time:	15mS max.			
Operation Life:	1M Cycles			
Vibration (operating):	20-2000Hz, 10G RMS			
Mechanical Shock (non-operating):	50G, 1/2sine, 11mS			
RF Connectors:	2.92mm Female			
Power Supply & Control Interface Connectors:	D-Sub 15			
Mounting:	4-Φ3.8mm through-hole			

[1] Exclude connectors.

Pin Numbering

Pin	Function	Pin	Function
1~6	V1~V6/A1~A6	14	COM (Indicator)
7	COM	15	V (TTL or Indicator)
8~13	Indicator (1~6)		

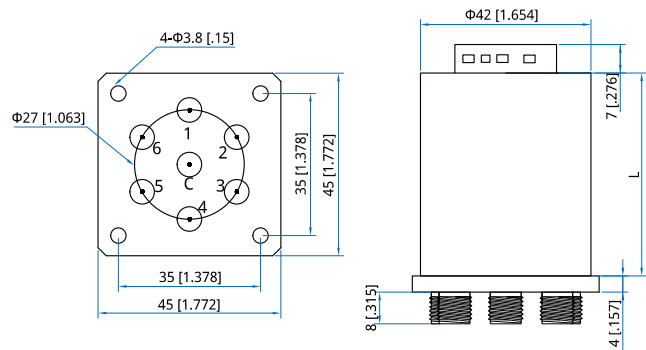
Port

SP3T	1, 3, 5	SP5T	1~5
SP4T	1~2, 4~5	SP6T	1~6

Environmental

Temperature:	-25~+65°C
Extended Temperature:	-55~+85°C

Outline Drawings



Height (L)	Standard	TTL
mm	62	72
in	2.44	2.84

Unit: mm [in]
 Tolerance: ±0.5mm [±0.02in]

Additional Options

TTL: T Indicators: I Extended Temperature: Z

How To Order

QMSVK-F-WXYZ

V: 3~6 (SP3T~SP6T)

F: Frequency in GHz

W: Actuator Type. Normally Open: 3.

X: Voltage. +12V: E, +18V: H, +24V: K, +28V: M.

Y: Power Interface. D-Sub: 1.

Z: Additional Options.

Examples:

To order a SP4T switch, DC-40GHz, Normally Open, +12V, D-Sub, TTL, Indicators, specify QMS4K-40-3E1TI.

Customization is available upon request.