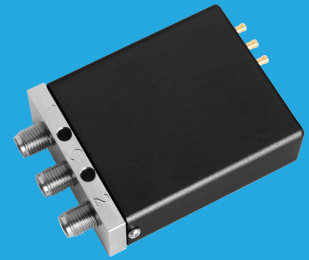


## QMS2S DC~18GHz, SPDT

Features:  
\* High Power  
\* Long Operation Life

Applications:  
\* Wireless  
\* Transmitter  
\* Laboratory Test  
\* Radar



### Electrical

Frequency:		DC~18GHz			
Impedance:		50Ω			
Frequency range (GHz)	Insertion Loss (dB)	Isolation (dB)	VSWR		
DC~6	0.2	70	1.2		
6~12	0.25	70	1.3		
12~18	0.4	60	1.4		
Voltage (V)		+12	+18	+24	+28
Current (mA)	Failsafe	190	136	98	83
	Latching	200	119	90	85

### Mechanical

Size*1:	40*L*15mm 1.575*L*0.591in
Weight:	70g
Switching Sequence:	Break before Make
Switching Time:	15mS max.
Operation Life:	1M Cycles
Vibration (operating):	20-2000Hz, 10G RMS
Mechanical Shock (non-operating):	50G, 1/2sine, 11mS
RF Connectors:	SMA Female
Power Supply & Control Interface Connectors:	Feed Through/Terminal Post or D-Sub 9
Mounting:	2-Φ3.2mm through-hole

[1] Exclude connectors.

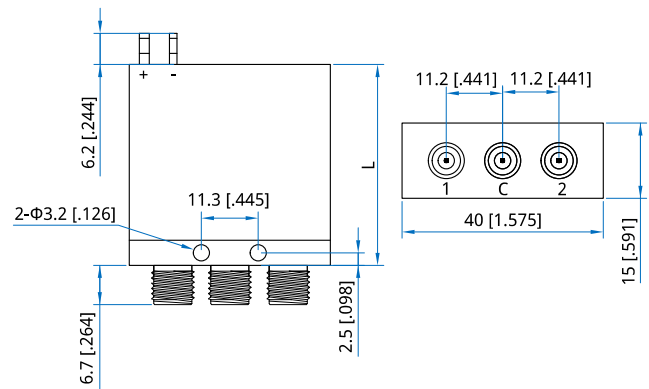
### Pin Numbering

Pin	Function	Pin	Function
1	V1/A1 (1)	5~6	Indicator (1~2)
2	V2/A2 (Latching Only)	7	COM (Indicator)
3	COM	9	V (TTL or Indicator)
4/8	NA		

### Environmental

Temperature:	-25~+65°C
Extended Temperature:	-55~+85°C

### Outline Drawings



Height (L)	Standard	TTL	Indicator
mm	40	50	60
in	1.58	1.97	2.36

Unit: mm [in]

Tolerance: ±0.5mm [±0.00in]

### Additional Options

TTL: T      Indicators: I      Extended Temperature: Z

### How To Order

#### QMS2S-F-WXYZ

F: Frequency in GHz

W: Actuator Type. Failsafe: 0, Latching: 1.

X: Voltage. +12V: E, +18V: H, +24V: K, +28V: M.

Y: Power Interface. Pin: 0, D-Sub: 1.

Z: Additional Options.

Examples:

To order a SPDT switch, DC-18GHz, Failsafe, +12V, D-Sub, TTL, Indicators, specify QMS2S-18-0E1TI.

Customization is available upon request.