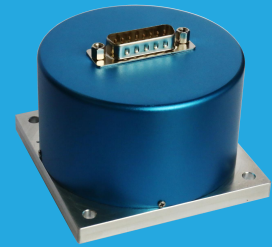


## QMS18S

### DC~4GHz, SP13T~SP18T

Features:  
 \* High Power  
 \* Long Operation Life

Applications:  
 \* Wireless  
 \* Transmitter  
 \* Laboratory Test  
 \* Radar



### Electrical

Frequency:		DC~6GHz		
Impedance:		50Ω		
Frequency range (GHz)	Insertion Loss (dB)	Isolation (dB)	VSWR	
DC~3	0.25	80	1.25	
3~6	0.35	70	1.35	
Voltage (V)		+12	+24	+28
Current (mA)	Normally Open	300	130	100

### Mechanical

Size*1:	72*L*72mm 2.835*L*2.835in
Switching Sequence:	Break before Make
Switching Time:	15mS max.
Operation Life:	2M Cycles
Vibration (operating):	20-2000Hz, 10G RMS
Mechanical Shock (non-operating):	100G, 1/2sine, 11mS
RF Connectors:	SMA Female
Power Supply & Control Interface Connectors:	D-Sub 26
Mounting:	4-Φ4.8mm through-hole

[1] Exclude connectors.

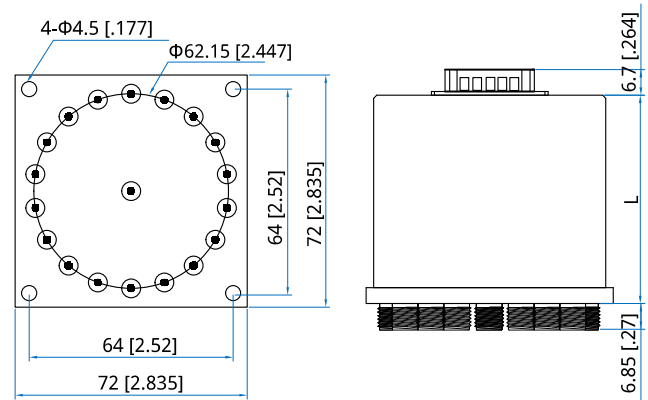
### Pin Numbering

Pin	Function	Pin	Function
1~18	V1~V18/A1~A18	20~25	NA
19	COM	26	V (TTL Only)

### Environmental

Temperature: -40~+75°C

### Outline Drawings



Unit: mm [in]  
 Tolerance: ±0.2mm [±0.008in]

Standard: L=63  
 TTL/Indicators: L=72  
 TTL&Indicators: L=80

### Additional Options

TTL: T  
 Indicators: I

### How To Order

#### QMSVS-F-WXYZ

V: 13~18 (SP13T~SP18T)  
 F: Frequency in GHz  
 W: Actuator Type. Normally Open: 3.  
 X: Voltage. +12V: E, +15V: F, +24V: K, +28V: M.  
 Y: Power Interface. D-Sub: 1.  
 Z: Additional Options..

Examples:

To order a SP14T switch, DC-3GHz, Normally Open, +12V, D-Sub, TTL, Indicators, specify QMS14S-3-3E1TI.

Customization is available upon request.