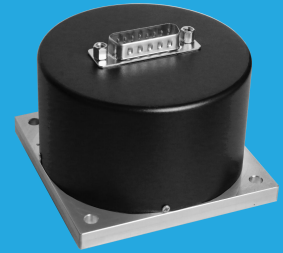


## QMS10KT DC~26.5GHz, SP7T~SP10T, Terminated

Features:  
\* High Power  
\* Long Operation Life

Applications:  
\* Wireless  
\* Transmitter  
\* Laboratory Test  
\* Radar



### Electrical

Frequency:	DC~26.5GHz				
Impedance:	50Ω				
Frequency range (GHz)	Insertion Loss (dB)	Isolation (dB)	VSWR		
DC~6	0.3	80	1.3		
6~12	0.4	70	1.4		
12~18	0.8	60	1.6		
18~26.5	0.9	50	1.9		
Voltage (V)		+12	+18	+24	+28
Current (mA)	Normally Open	330	220	167	140
	Latching	290	225	150	120

### Mechanical

Size*1:	76*L*76mm 2.992*L*2.992in			
Weight:	380g			
Switching Sequence:	Break before Make			
Switching Time:	15mS max.			
Operation Life:	1M Cycles			
Vibration (operating):	20-2000Hz, 10G RMS			
Mechanical Shock (non-operating):	50G, 1/2sine, 11mS			
RF Connectors:	2.92mm Female			
Power Supply & Control Interface Connectors:	D-Sub 15			
Mounting:	4-Φ4.5mm through-hole			

[1] Exclude connectors.

### Pin Numbering

Pin	Function	Pin	Function
1~10	V1~V10/A1~A10	13~14	NA
11	COM	15	V (TTL Only)
12	RESET (Latching Only)		

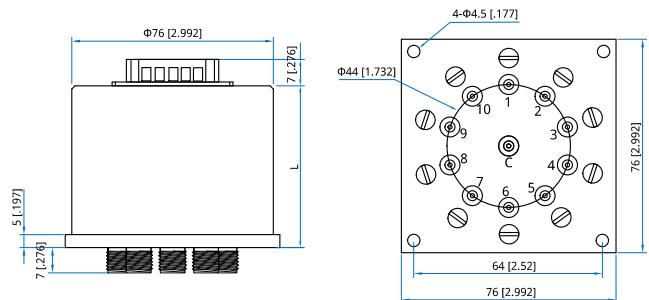
### Port

SP7T	1~2, 4~5, 7~8, 10	SP9T	1~9
SP8T	2~5, 7~10	SP10T	1~10

### Environmental

Temperature: -25~+65°C  
Extended Temperature: -55~+85°C

### Outline Drawings



Height (L)	Standard	TTL	Indicator
mm	50	60	65
in	1.97	2.36	2.56

Unit: mm [in]

Tolerance: ±0.5mm [±0.02in]

### Additional Options

TTL: T      Indicators: I      Extended Temperature: Z

### How To Order

#### QMSVKT-F-WXYZ

V: 7~10 (SP7T~SP10T)

F: Frequency in GHz

W: Actuator Type. Latching: 1, Normally Open: 3.

X: Voltage. +12V: E, +18V: H, +24V: K, +28V: M.

Y: Power Interface. D-Sub: 1.

Z: Additional Options.

Examples:

To order a SP10T terminated switch, DC-26.5GHz, Normally Open, +12V, D-Sub, TTL, Indicators, specify QMS10KT-26.5-3E1TI.

Customization is available upon request.