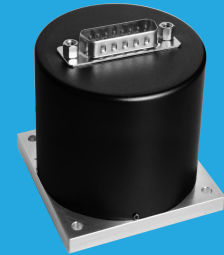


## QMS10K

### DC~26.5GHz, SP7T~SP10T

Features:  
 \* High Power  
 \* Long Operation Life

Applications:  
 \* Wireless  
 \* Transmitter  
 \* Laboratory Test  
 \* Radar



#### Electrical

Frequency:	DC~26.5GHz			
Impedance:	50Ω			
Frequency range (GHz)	Insertion Loss (dB)	Isolation (dB)	VSWR	
DC~3	0.3	85	1.3	
3~10	0.4	80	1.4	
10~18	0.6	60	1.6	
18~26.5	0.8	55	1.9	
Voltage (V)	+12	+18	+24	+28
Current (mA)	Normally Open	290	145	100

#### Mechanical

Size*1:	46*L*46mm			
	1.811*L*1.811in			
Weight:	225g			
Switching Sequence:	Break before Make			
Switching Time:	15mS max.			
Operation Life:	1M Cycles			
Vibration (operating):	20-2000Hz, 10G RMS			
Mechanical Shock (non-operating):	50G, 1/2sine, 11mS			
RF Connectors:	2.92mm Female			
Power Supply & Control Interface Connectors:	D-Sub 15			
Mounting:	4-Φ3.8mm through-hole			

[1] Exclude connectors.

#### Pin Numbering

Pin	Function	Pin	Function
1~10	V1~V10/A1~A10	12~14	NA
11	COM	15	V (TTL Only)

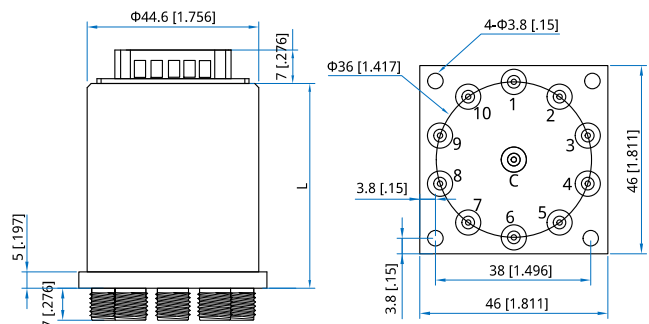
#### Port

SP7T	1~2, 4~5, 7~8, 10	SP9T	1~9
SP8T	2~5, 7~10	SP10T	1~10

#### Environmental

Temperature: -25~+65°C  
 Extended Temperature: -55~+85°C

#### Outline Drawings



Height (L)	Standard	TTL
mm	62	72
in	2.44	2.84

Unit: mm [in]

Tolerance: ±0.5mm [±0.02in]

#### Additional Options

TTL: T      Indicators: I      Extended Temperature: Z

#### How To Order

**QMSVK-F-WXYZ**

V: 7~10 (SP7T~SP10T)

F: Frequency in GHz

W: Actuator Type. Normally Open: 3.

X: Voltage. +12V: E, +18V: H, +24V: K, +28V: M.

Y: Power Interface. D-Sub: 1.

Z: Additional Options.

Examples:

To order a SP10T switch, DC-18GHz, Normally Open, +12V, D-Sub, TTL, Indicators, specify QMS10K-18-3E1TI.

Customization is available upon request.