

QCC5028B

High Power, High Isolation

Features:

- * High Power
- * High Isolation
- * Low Insertion Loss
- * Low VSWR

Applications:

- * Wireless
- * Radar
- * Laboratory Test

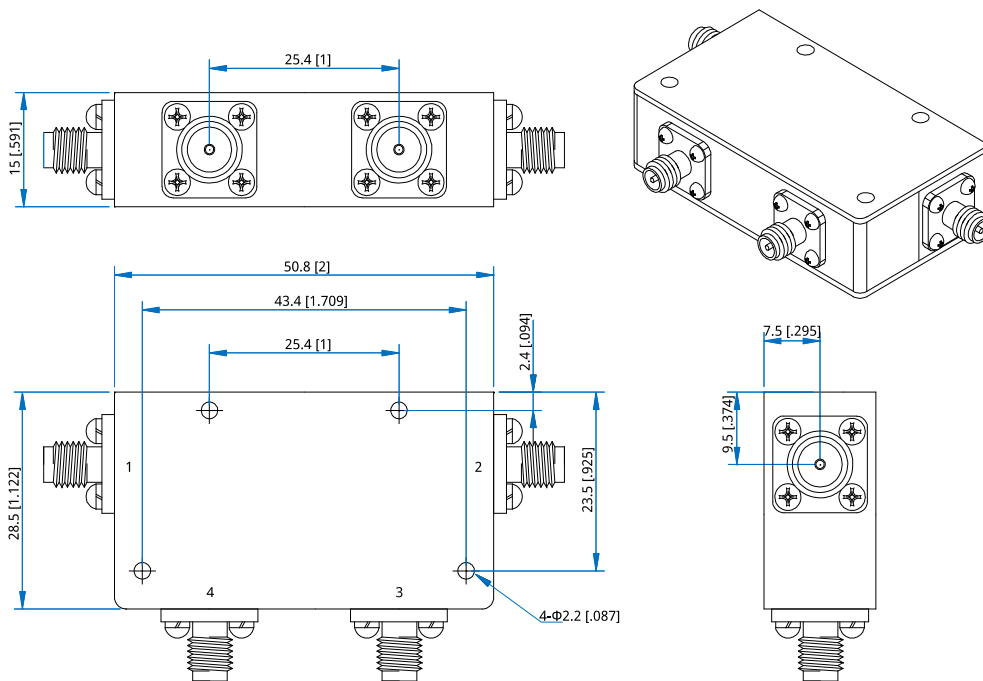
Description

QCC5028B series Coaxial Circulators cover frequency range 2600~3200MHz. High power, high isolation and low insertion loss make it ideal for a lot of applications like amplifiers, transceivers, etc.

Specifications

Frequency (MHz)	Bandwidth (MHz)	IL (dB Max.)	Isolation (dB Min.)	VSWR (Max.)	Average Power* ¹ (W)	Connector	Temperature (°C)
2600~3200	600	1	35	1.35	100	SMA	-40~+75

[1] The connector is SMA, and the maximum average power can only reach 100W

Outline Drawings


Unit: mm [inch]

Tolerance: $\pm 0.2\text{mm}$ [$\pm 0.008\text{in}$]

Mechanical

Size*²: 50.8*28.5*15mm

2*1.122*0.591in

Mounting: 4- $\Phi 2.2\text{mm}$ through-hole

[2] Exclude connectors

Connector Naming Rules:

S - SMA Female

Direction Naming Rules:

1 - Clockwise

2 - Anticlockwise

How To Order**QCC5028B-V-W-X-Y-Z**

V: Start frequency in MHz

W: Stop frequency in MHz

X: Average power in W

Y: Connector type

Z: Direction type

Examples:

To order a QCC5028B series Circulator, 2600~3200MHz, 100W,SMA female, Clockwise, specify QCC5028B-2600~3200-K1-S-1.

Customization is available upon request.