

QA11

1.0mm to 1.0mm

Features:
* Low VSWR

Applications:
* Wireless
* Transmitter
* Laboratory Test
* Radar

Electrical

Frequency:	DC~110GHz
VSWR:	1.35 max.
Insertion Loss:	0.6dB max.
Impedance:	50Ω

Mechanical

RF Connectors:	1.0mm
Mating Life Cycle:	2000 cycles
Outer Conductor:	Passivated SUS303 stainless steel or gold plated beryllium copper
Dielectric:	PEEK or CPS or PEI
Inner Conductor:	Gold plated beryllium copper

Environmental

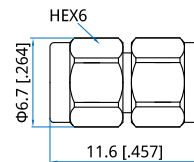
Temperature:	-55~+85°C
--------------	-----------

How To Order

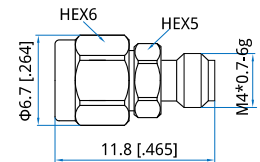
- QA11-MM** - 1.0mm(m) to 1.0mm(m), Outline A
- QA11-MF** - 1.0mm(m) to 1.0mm(f), Outline B
- QA11-FF** - 1.0mm(f) to 1.0mm(f), Outline C
- QA11H-FF** - 1.0mm(f) to 1.0mm(f), bulk head, Outline D
- QA11L-FF** - 1.0mm(f) to 1.0mm(f), flange mount, Outline E

Customization is available upon request.

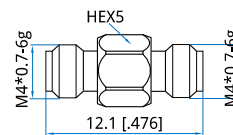
Outline Drawings



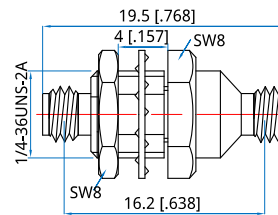
Outline A



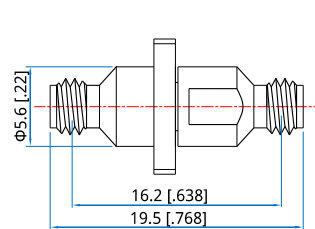
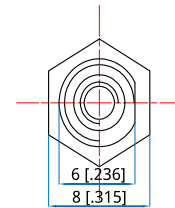
Outline B



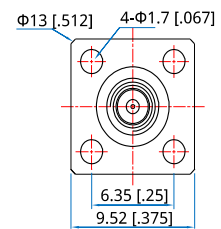
Outline C



Outline D



Outline E



Unit: mm [in]
Tolerance: ±0.2mm [±0.008in]