

QLB-10700-12750-60-90-1

10.7~11.7GHz, 11.7~12.75GHz, 60dB, 90K, Ku-Band

Features:

- * Broad Band
- * Low Noise Temperature
- * Low Input VSWR

Applications:

- * Fixed Station
- * Mobile Station
- * Laboratory Test

Electrical

Gain:	60dB
Gain Flatness:	3dBp-p/1000MHz max. 5dBp-p max.
Noise Temperature:	90K
Output Power (Psat):	10dBm min.
Input/Output VSWR:	1.35/1.5
Phase Noise:	-60dBc/Hz@100Hz max. -70dBc/Hz@1KHz max. -80dBc/Hz@10KHz max. -90dBc/Hz@100KHz max.
Frequency Stability:	±1ppm max. @Internal Reference
External Reference:	10MHz, 0±3dBm
Voltage:	12~24V DC
Current:	450mA typ. @15V
Impedance:	50Ω

Input RF Frequency (GHz)	Output IF Frequency (MHz)	LO Frequency (GHz)
10.7~11.7	950~1950	9.75
11.7~12.75	950~2000	13.7

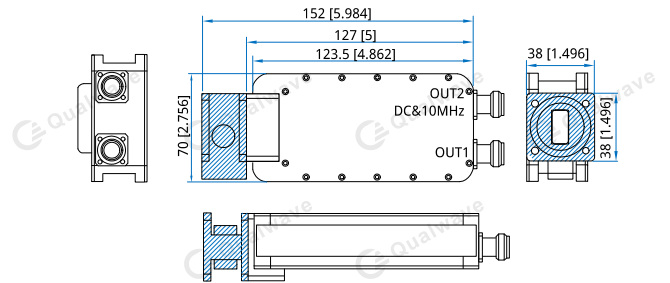
Mechanical

Size*1:	127*70*38mm 5*2.756*1.496in
RF Input Waveguide Size:	WR-75 (BJ120)
Flange:	FBM120
Output (L) Connectors:	N Female /SMA Female /75Ω F Inch Thread Female
Ext.ref. Input(10MHz)/ IF Output (H) Connectors:	N Female /SMA Female /75Ω F Inch Thread Female
Weight:	600g max.

[1] Exclude connectors.

Environmental

Operating Temperature:	-40~+60°C
Operating Humidity:	0~100%

Outline Drawings


Unit: mm [in]

Tolerance: ±0.5mm [±0.02in]

How To Order

QLB-10700-12750-60-90-1-Z

Z: Output connector type

Connector naming rules:

- N - N female
- S - SMA female
- F - F Inch Thread female

Examples:

To order a Block Downconverters (LNBS), 10.7~12.75GHz, 60dB, 90K, N female, specify QLB-10700-12750-60-90-1-N.

Customization is available upon request.