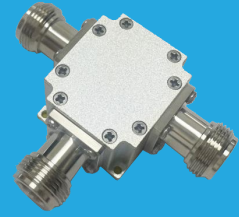


QBT-10-4200-N

0.01~4.2GHz

Features:
 * Broadband
 * Small Size

Applications:
 * Telecom
 * Satcom
 * Laboratory Test
 * Instrumentation



Electrical

Frequency:	0.01~4.2GHz
Insertion Loss:	0.8dB max.
VSWR:	1.25 max.
Voltage:	+72V DC
Current:	2.5A max.
RF Input Power:	5W max.
Impedance:	50Ω

Mechanical

Connectors:	N female N male
Mounting:	4-Φ2.2mm through-hole

How To Order

QBT-X-Y-N-Z

X: Start frequency in MHz

Y: Stop frequency in MHz

- Z: 01 N(f) to N(f), DC in Pin (Outline A)
 02: N(f) to N(f), DC in N female (Outline B)
 03: N(m) to N(f), DC in Pin (Outline C)
 04: N(m) to N(f), DC in N female (Outline D)

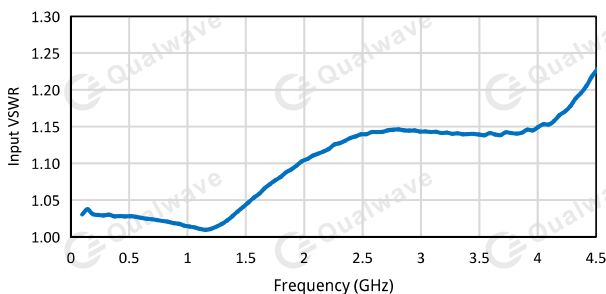
Examples:

To order a bias tee, 0.01~4.2GHz, N female to N female, DC in N female, specify QBT-10-4200-N-02.

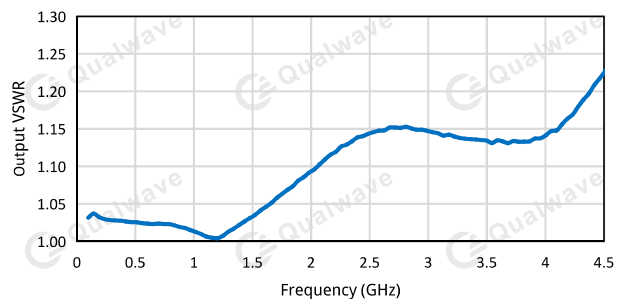
Customization is available upon request.

Typical Performance Curves

Input VSWR vs. Frequency



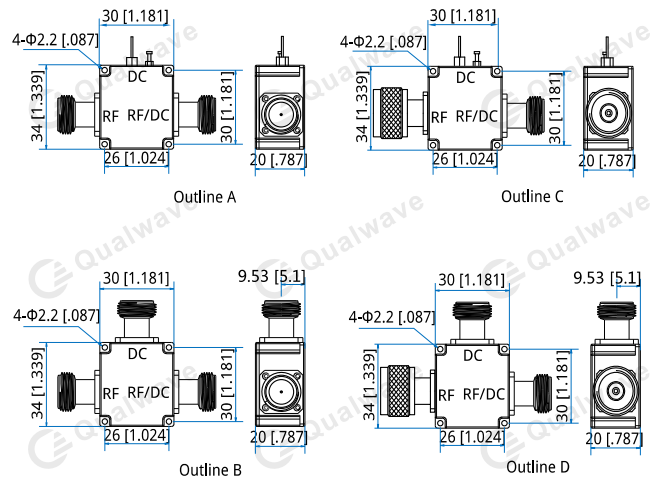
Output VSWR vs. Frequency



Environmental

Operating Temperature:	-40~+65°C
Non-operating Temperature:	-55~+85°C

Outline Drawings



Unit: mm [in]
 Tolerance: ±0.5mm [±0.02in]

