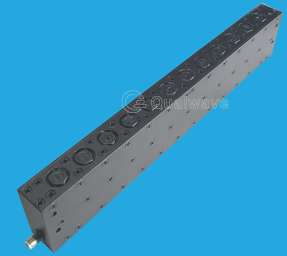


## QRF-1805-1880-60

1.805~1.88GHz, 60dB

- |   |  |
|---|--|
| <b>Features:</b><br>* High Stopband Rejection<br>* Small Size | <b>Applications:</b><br>* Telecom<br>* Laboratory Test<br>* Receivers<br>* Instrumentation |
|---|--|



### Electrical

Passband:	DC~1.78GHz 1.905~5.2GHz
Passband Insertion Loss:	2dB typ.
Passband VSWR:	1.5 typ.
Stopband:	1.805~1.88GHz
Stopband Attenuation:	60dB min.
Average Power:	30W max.
Impedance:	50Ω

### Mechanical

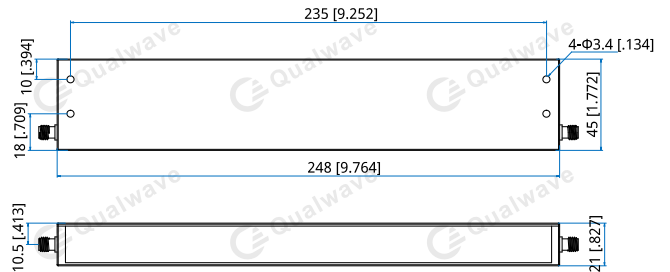
Size <sup>*1</sup> :	248*45*21mm 9.764*1.772*0.827in
RF Connectors:	SMA Female
Mounting:	4-Φ3.4mm through-hole

[1] Exclude connectors.

### Environmental

Temperature: -40~+70°C

### Outline Drawings



Unit: mm [in]  
Tolerance: ±0.2mm [±0.008in]

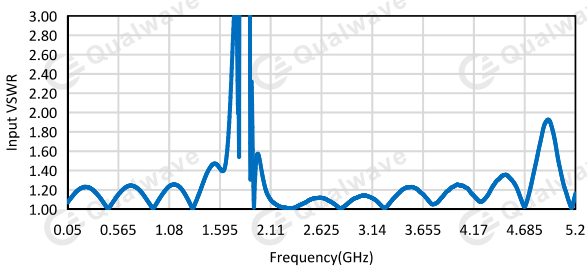
### How To Order

**QRF-1805-1880-60**

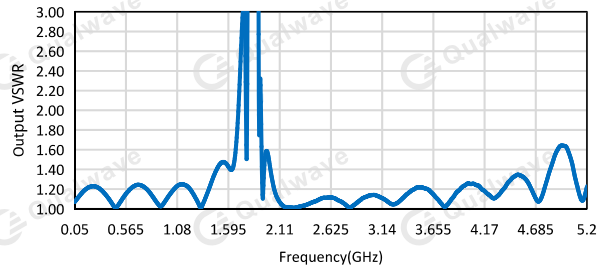
Customization is available upon request.

### Typical Performance Curves

Input VSWR vs. Frequency



Output VSWR vs. Frequency



Stopband Attenuation vs. Frequency

