

## QBF-6000-8192-20

6~8.192GHz, 20dBc

### Features:

- \* High Stopband Rejection
- \* Small Size

### Applications:

- \* Telecom
- \* Laboratory Test
- \* Receivers
- \* Instrumentation

### Electrical

Passband:	6~8.192GHz
Passband Insertion Loss:	3dB max.
VSWR:	1.8 max.
Stopband Attenuation:	10dBc@5900MHz min.
	10dBc@8300MHz min.
	20dBc@5700MHz min.
	20dBc@8500MHz min.

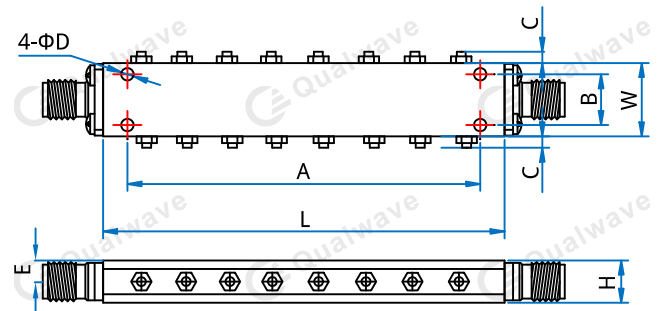
### Mechanical

RF Connectors:	SMA Female
Mounting:	4- $\Phi$ 2.2mm through-hole

### Environmental

Operating Temperature:	-40~+70°C
Non-operating Temperature:	-55~+85°C

### Outline Drawings



Size	L	W	H	A	B	C	D	E
mm	79	17	8.5	70.6	13.8	2	2.2	4.25
in	3.11	0.669	0.335	2.78	0.543	0.079	0.087	0.167

Unit: mm [in]

Tolerance:  $\pm 0.2$ mm [ $\pm 0.008$ in]

### How To Order

[QBF-6000-8192-20](#)

Customization is available upon request.