

QBF-2700-3500-60

2.7~3.5GHz, 60dBc

Features:

- * High Stopband Rejection
- * Small Size

Applications:

- * Telecom
- * Laboratory Test
- * Receivers
- * Instrumentation

Electrical

Passband:	2.7~3.5GHz
Passband Insertion Loss:	0.9dB max.
VSWR:	1.7 max.
Stopband Attenuation:	60dBc@2.4GHz min. 60dBc@3.8GHz min.
Average Power:	1W
Peak Power:	2W

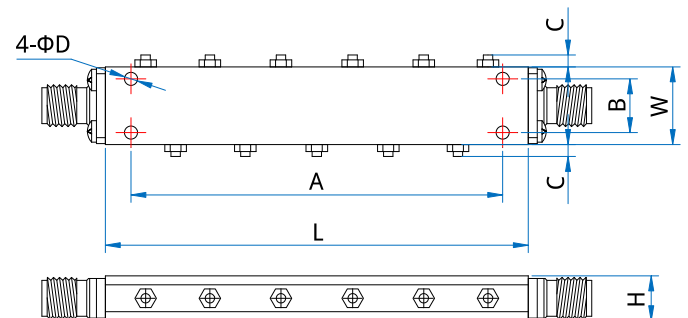
Mechanical

RF Connectors:	SMA Female
Mounting:	4* Φ 2.2mm through-hole

Environmental

Operating Temperature:	-40~+70°C
Non-operating Temperature:	-55~+85°C

Outline Drawings



Size	L	W	H	A	B	C	D
mm	93	30	12	89	26	2.5	2.2
in	3.661	1.181	0.472	3.504	1.024	0.098	0.087

Unit: mm [in]

Tolerance: \pm 0.2mm [\pm 0.008in]

How To Order

QBF-2700-3500-60

Customization is available upon request.