

## QBF-18000-20000-30

18~20GHz, 30dB

### Features:

- \* High Stopband Rejection
- \* Small Size

### Applications:

- \* Telecom
- \* Laboratory Test
- \* Receivers
- \* Instrumentation

### Electrical

Passband:	18~20GHz
Passband Insertion Loss:	2dB max.
VSWR:	1.5 max.
Stopband Attenuation:	30dB@DC~17.2GHz min. 30dB@20.8~30GHz min.

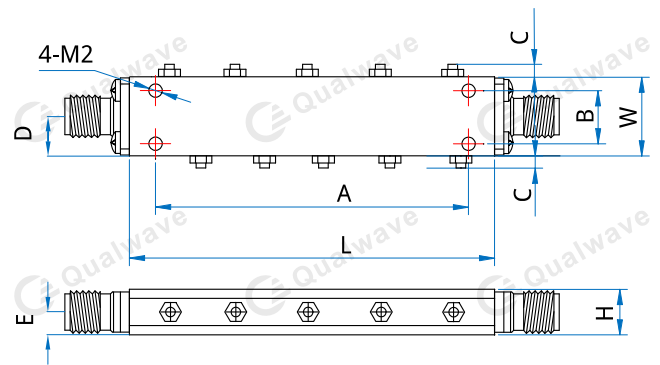
### Mechanical

RF Connectors:	2.92 Female
Mounting:	4-M2 through-hole

### Environmental

Operating Temperature:	-40~+70°C
Non-operating Temperature:	-55~+85°C

### Outline Drawings



Size:	L	W	H	A	B	C	D	E
mm:	51	13	7.5	43	9.2	2	6.5	3.75
in:	2.008	0.512	0.295	1.693	0.362	0.079	0.256	0.148

Unit: mm [in]

Tolerance:  $\pm 0.2\text{mm}$  [ $\pm 0.008\text{in}$ ]

### How To Order

**QBF-18000-20000-30**

Customization is available upon request.