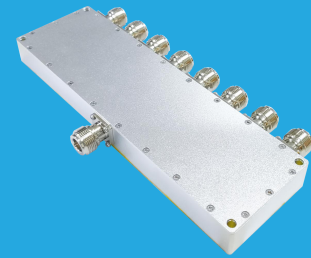


QPD8-0-2000-2

8-Way, DC~2GHz, 2W

Features:
 * Small Size
 * Low Insertion Loss

Applications:
 * Amplifiers
 * Mixers
 * Antennas
 * Laboratory Test



Electrical

Frequency:	DC~2GHz
Insertion Loss:	19dB max.
Input VSWR:	1.25 max.
Output VSWR:	1.25 max.
Isolation:	17.5dB min.
Amplitude Balance:	±0.5dB
Phase Balance:	±1°
Impedance:	50Ω
Average Power:	2W as divider

Mechanical

Size ^{*1} :	200*60*20mm
	7.874*2.362*0.787in
Connectors ^{*2} :	N Female
	TNC Female
Mounting:	4-Φ4.5mm through-hole

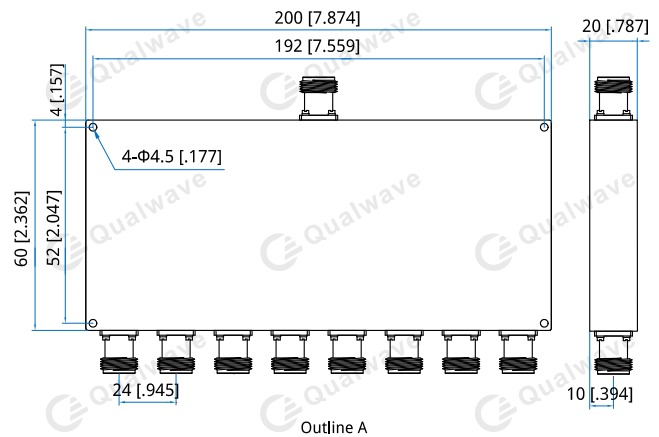
[1] Exclude connectors.

[2] Female connectors can be replaced with male connectors on request

Environmental

Operating Temperature:	-35~+75°C
Non-operating Temperature:-	-45~+85°C

Outline Drawings



Unit: mm [in]

Tolerance: ±0.5mm [±0.02in]

How To Order

QPD8-0-2000-2-Y

Y: Connector type

Connector naming rules:

N - N Female (Outline A)

T - TNC Female

Examples:

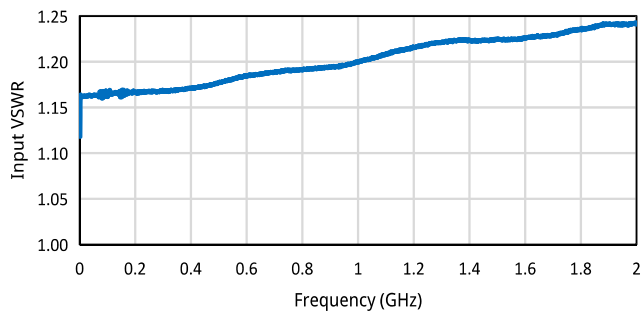
To order a 8-way power divider, 0~2GHz, 2W, N female, specify QPD8-0-2000-2-N.

Customization is available upon request.

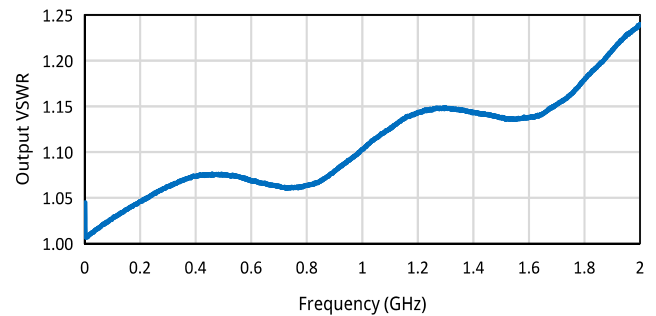
Typical Performance Curves

N

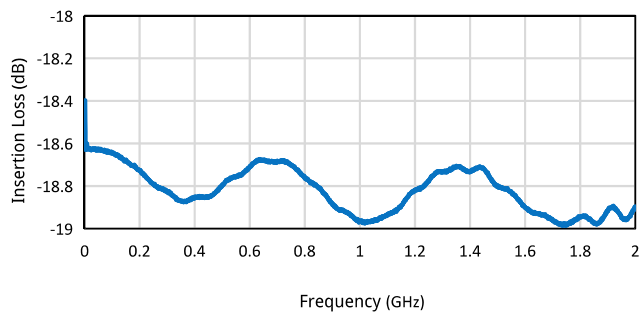
Input VSWR vs. Frequency



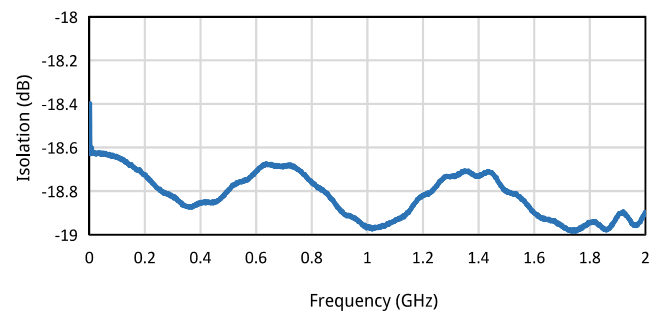
Output VSWR vs. Frequency



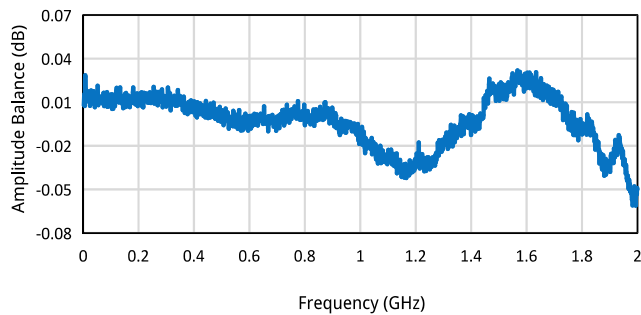
Insertion Loss vs. Frequency



Isolation vs. Frequency



Amplitude Balance vs. Frequency



Phase Balance vs. Frequency

