

## QPD4-80-3000-30

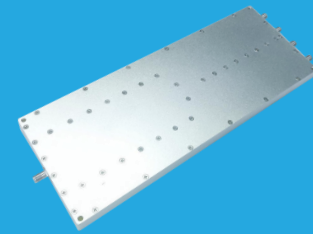
4-Way, 0.08~3GHz

**Features:**

- \* Small Size
- \* Low Insertion Loss

**Applications:**

- \* Amplifiers
- \* Mixers
- \* Antennas
- \* Laboratory Test



### Electrical

Frequency:	0.08~3GHz
Insertion Loss:	4.6dB max.
Input VSWR:	1.3 max.
Output VSWR:	1.2 max.
Isolation:	20dB min.
Amplitude Balance:	0.3dB max.
Phase Balance:	±2°
Impedance:	50Ω
Power @SUM Port:	30W max. as divider 2W max. as combiner

### Mechanical

Size <sup>*1</sup> :	226*90*12mm 8.898*3.543*0.472in
Connectors <sup>*2</sup> :	SMA Female SMP Male
Mounting:	4-Φ3.2mm through-hole

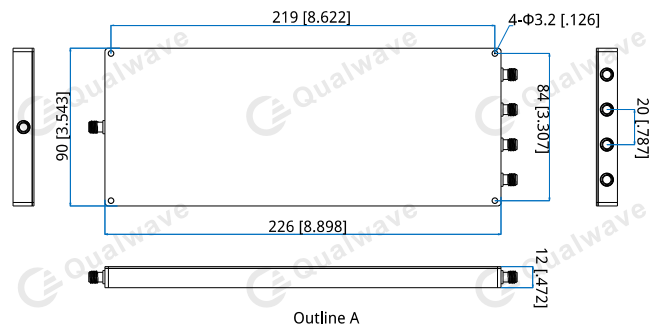
[1] Exclude connectors.

[2] Female connectors can be replaced with male connectors on request.

### Environmental

Operation Temperature:	-45~+75°C
Non-operating Temperature:	-55~+85°C

### Outline Drawings



Unit: mm [in]  
Tolerance: ±0.5mm [±0.02in]

### How To Order

**QPD4-80-3000-30-Y**

Y: Connector type

Connector naming rules:  
S - SMA Female (Outline A)  
P - SMP Male

### Examples:

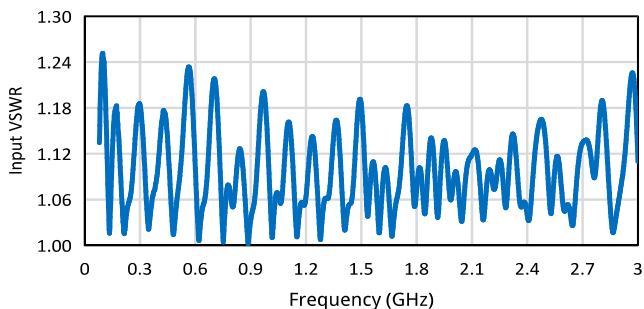
To order a 4-way power divider, 0.08~3GHz, 30W, SMA female, specify QPD4-80-3000-30-S.

Customization is available upon request.

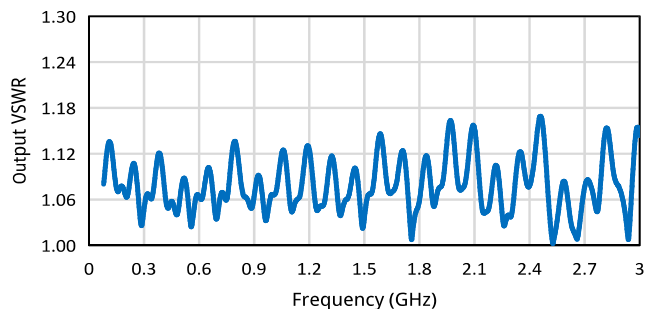
## Typical Performance Curves

### SMA

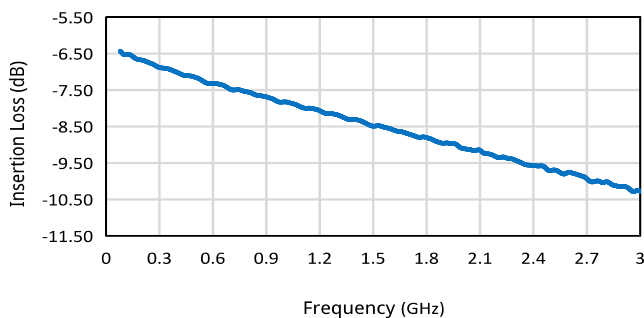
Input VSWR vs. Frequency



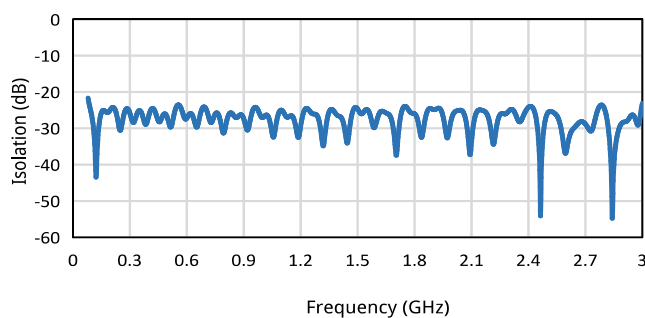
Output VSWR vs. Frequency



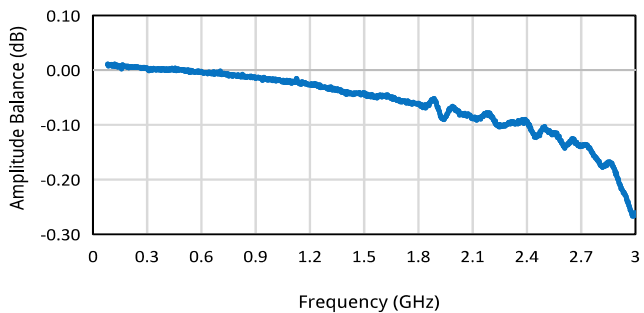
Insertion Loss vs. Frequency



Isolation vs. Frequency



Amplitude Balance vs. Frequency



Phase Balance vs. Frequency

