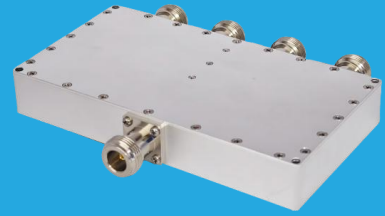


QPD4-105-140-K1

4-Way, 105~140MHz



Features:
 * Small Size
 * Low Insertion Loss

Applications:
 * Amplifiers
 * Mixers
 * Antennas
 * Laboratory Test

Electrical

Frequency:	105~140MHz
Insertion Loss:	0.4dB max.
Input VSWR:	1.25 max.
Output VSWR:	1.25 max.
Isolation:	20dB min.
Amplitude Balance:	±0.1dB
Phase Balance:	±1°
Impedance:	50Ω
Power @SUM Port:	100W max. as divider 100W max. as combiner

Mechanical

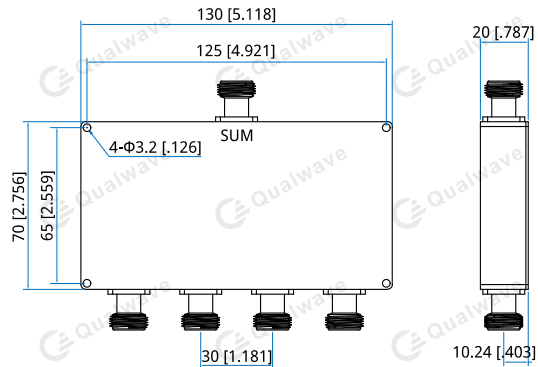
Size ^{*1} :	130*70*20mm 5.118*2.756*0.787in
Connectors:	N Female TNC Female

[1] Exclude connectors.

Environmental

Operating Temperature:	-35~+75°C
Non-operating Temperature:	-45~+85°C

Outline Drawings



Unit: mm [in]
 Tolerance: ±0.5mm [±0.02in]

How To Order

QPD4-105-140-K1-Y

Y: Connector type

Connector naming rules:

N - N Female (Outline A)

T - TNC Female

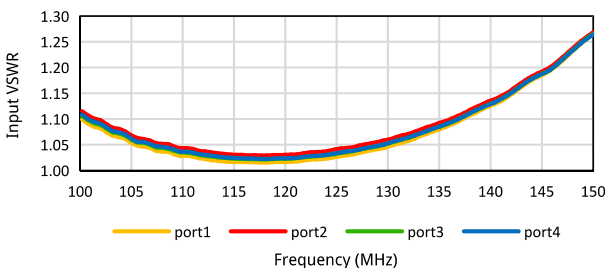
Examples:

To order a 4-way power divider, 0.105~0.14GHz, 100W, N female, specify QPD4-105-140-K1-N.

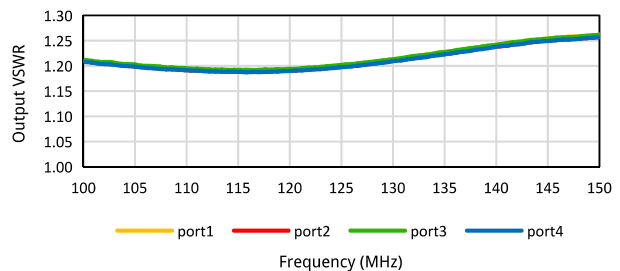
Customization is available upon request.

Typical Performance Curves

Input VSWR vs. Frequency

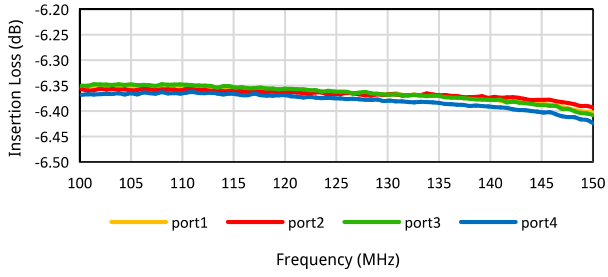


Output VSWR vs. Frequency

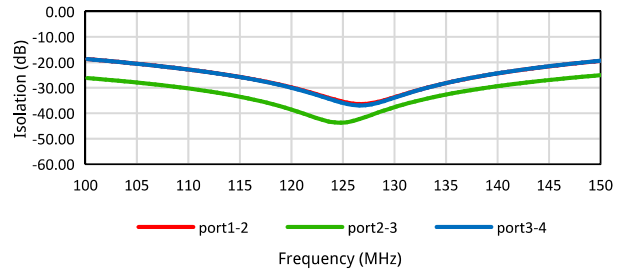


4-Way Power Divider/Combiner

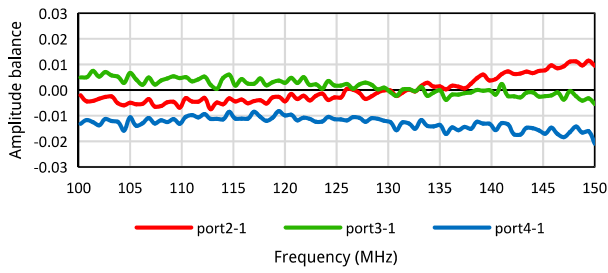
Insertion Loss vs. Frequency



Isolation vs. Frequency



Amplitude balance vs. Frequency



Phase balance vs. Frequency

