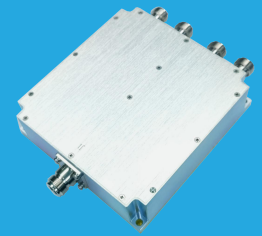


QPD4-100-180-K5

4-Way, 100~180MHz

Features:
 * High Power
 * Low Insertion Loss

Applications:
 * Amplifiers
 * Mixers
 * Antennas
 * Laboratory Test



Electrical

Frequency:	100~180MHz
Insertion Loss:	0.3dB max.
Input VSWR:	1.25 max.
Output VSWR:	1.2 max.
Isolation:	18dB min.
Amplitude Balance:	±0.1dB max.
Phase Balance:	±1° max.
Power @SUM Port:	500W max. as divider 500W max. as combiner

Mechanical

Size ^{*1} :	128*120*36mm 5.039*44.724*1.417in
Connectors ^{*2} :	N Female TNC Female
Mounting:	4-Φ4.5mm through-hole

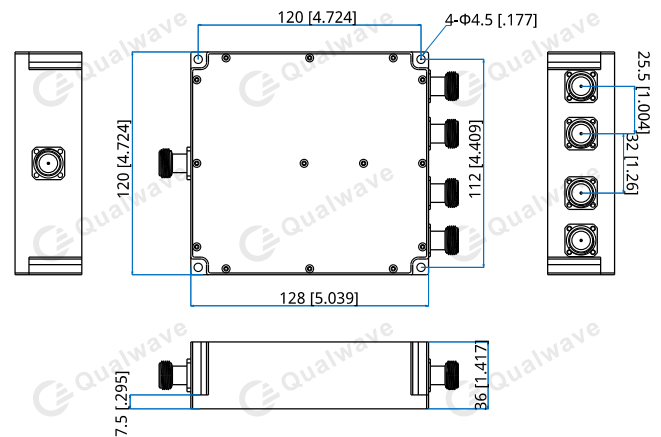
[1] Exclude connectors.

[2] Female connectors can be replaced with male connectors on request

Environmental

Operating Temperature:	-55~+85°C
Non-operating Temperature:	-55~+85°C

Outline Drawings



Outline A

Unit: mm [in]

Tolerance: ±0.3mm [±0.018in]

How To Order

QPD4-100-180-K5-Y

Y: Connector type

Connector naming rules:

N - N Female (Outline A)

T - TNC Female

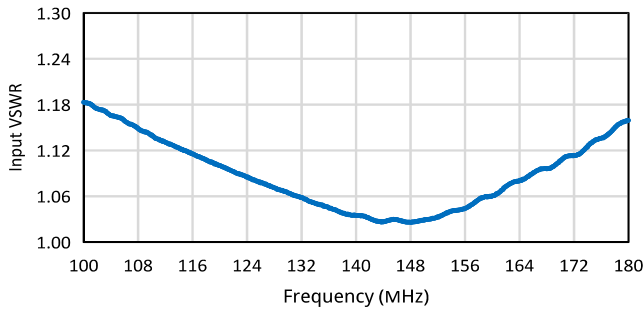
Examples:

To order a 4-way power divider, 100~180MHz, 500W, N female, specify QPD4-100-180-K5-N.

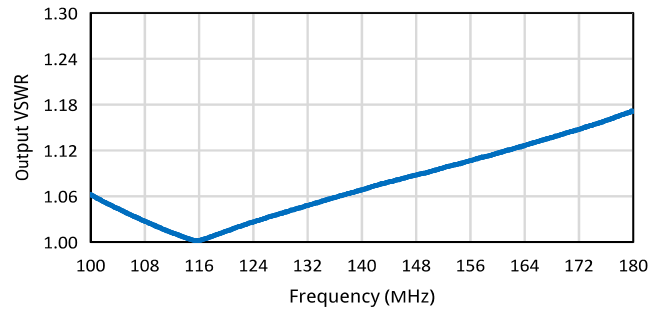
Customization is available upon request.

Typical Performance Curves

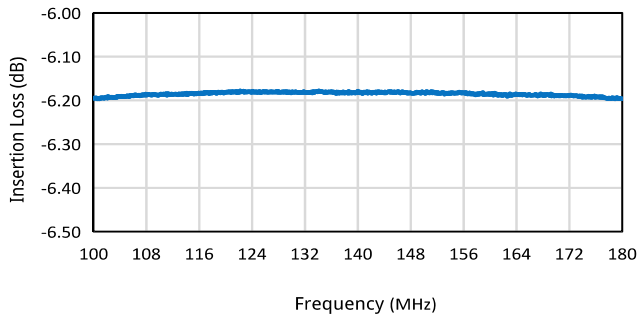
Input VSWR vs. Frequency



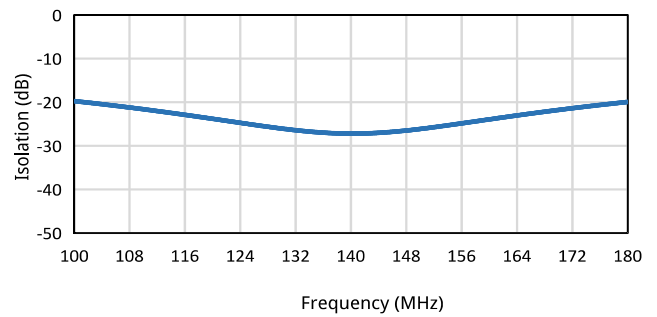
Output VSWR vs. Frequency



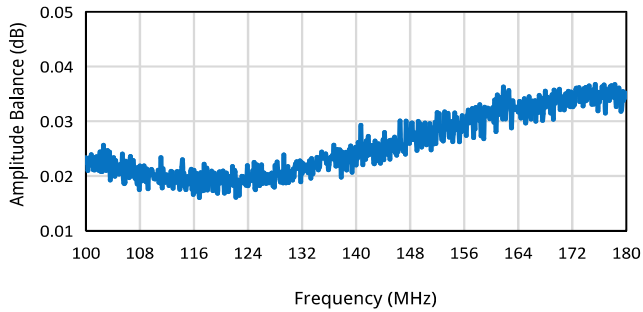
Insertion Loss vs. Frequency



Isolation vs. Frequency



Amplitude Balance vs. Frequency



Phase Balance vs. Frequency

