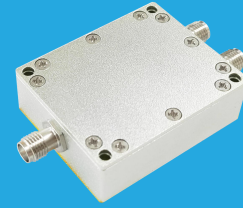


### QPD2-800-2700-30

#### 2-Way, 0.8~2.7GHz

Features:  
 \* Small Size  
 \* Low Insertion Loss

Applications:  
 \* Amplifiers  
 \* Mixers  
 \* Antennas  
 \* Laboratory Test



#### Electrical

Frequency:	0.8~2.7GHz
Insertion Loss:	0.5dB max.
Input VSWR:	1.2 max.
Output VSWR:	1.2 max.
Isolation:	22dB min.
Amplitude Balance:	±0.1dB max.
Phase Balance:	±0.5° max.
Impedance:	50Ω
Power @SUM Port:	30W max. as divider 2W max. as combiner

#### Mechanical

Size <sup>*1</sup> :	35*43*14mm 1.378*1.693*0.551in
Weight:	47g
Connectors <sup>*2</sup> :	SMA Female SMP Male
Mounting:	4-Φ2.8mm through-hole

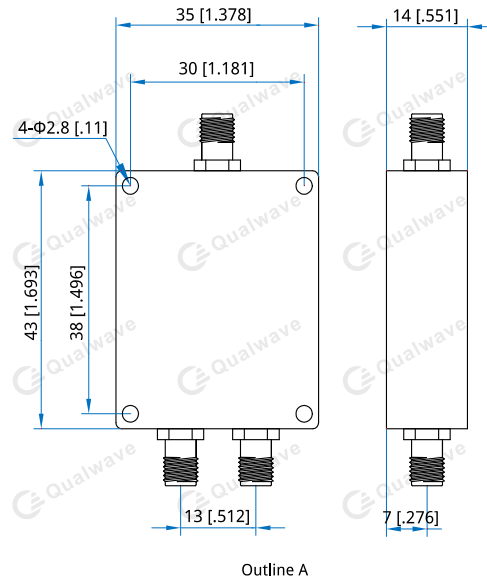
[1] Exclude connectors.

[2] Female connectors can be replaced with male connectors on request.

#### Environmental

Operating Temperature:	-35~+75°C
Non-operating Temperature:	-45~+85°C

#### Outline Drawings



Unit: mm [in]

Tolerance: ±0.5mm [±0.02in]

#### How To Order

**QPD2-800-2700-30-Y**

Y: Connector type

Connector naming rules:

S - SMA Female (Outline A)

P - SMP Male

Examples:

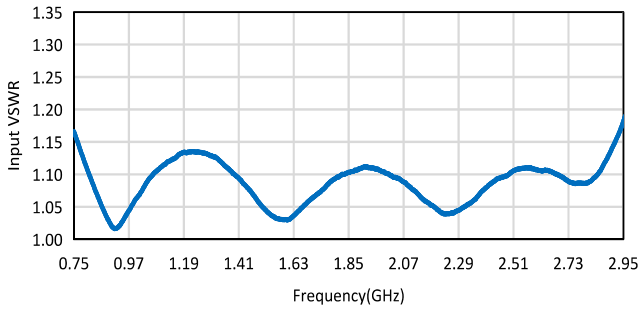
To order a 2-way power divider, 0.8~2.7GHz, 30W, SMA female, specify QPD2-800-2700-30-S.

Customization is available upon request.

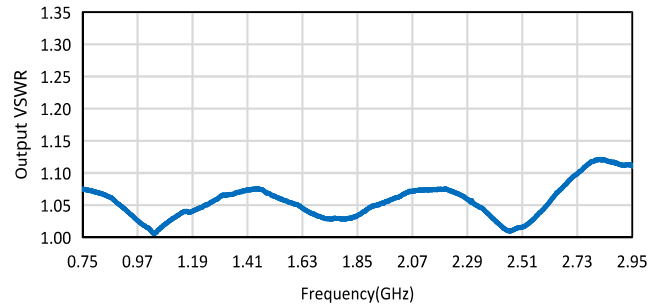
### Typical Performance Curves

#### SMA

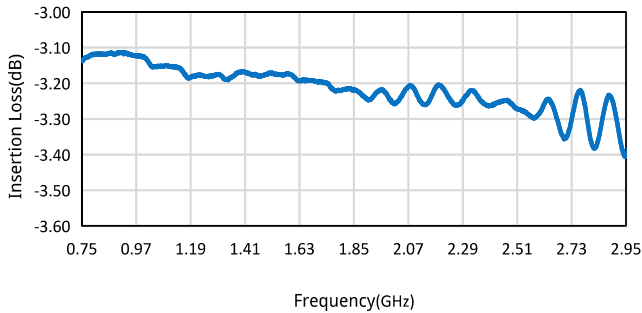
Input VSWR vs. Frequency



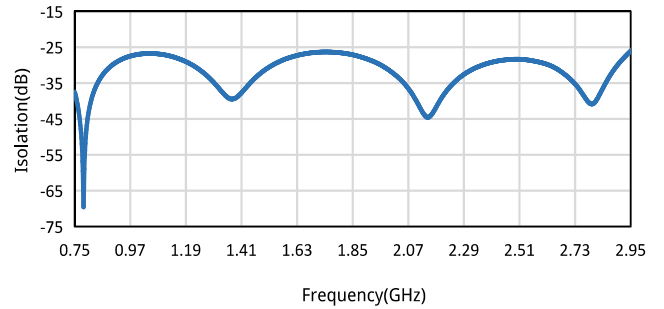
Output VSWR vs. Frequency



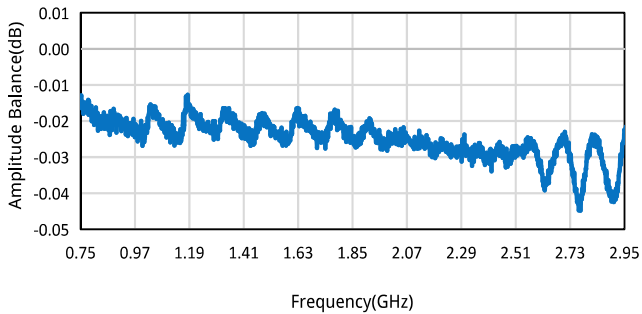
Insertion Loss vs. Frequency



Isolation vs. Frequency



Amplitude Balance vs. Frequency



Phase Balance vs. Frequency

