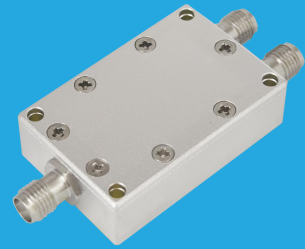


# QPD2-1000-8000-30

## 2-Way, 1~8GHz

Features:  
 \* Small Size  
 \* Low Insertion Loss

Applications:  
 \* Amplifiers  
 \* Mixers  
 \* Antennas  
 \* Laboratory Test



### Electrical

Frequency:	1~8GHz
Insertion Loss:	0.8dB max.
Input VSWR:	1.25 max.
Output VSWR:	1.2 max.
Isolation:	20dB min.
Amplitude Balance:	±0.1dB
Phase Balance:	±3°
Impedance:	50Ω
Power @SUM Port:	30W max. as divider 2W max. as combiner

### Mechanical

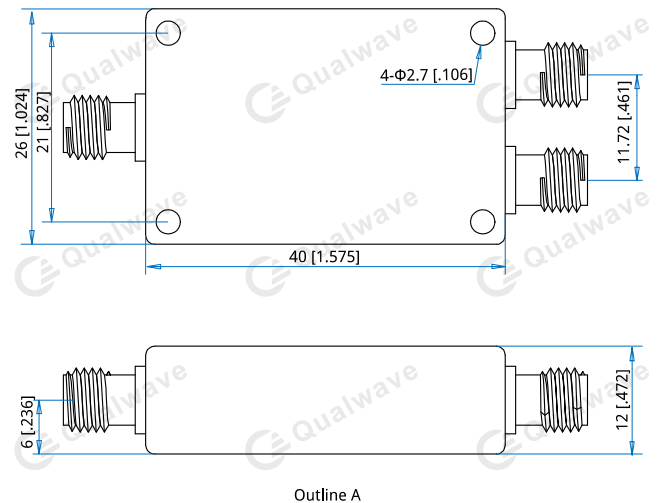
Size <sup>*1</sup> :	40*26*12mm 1.575*1.024*0.472in
Connectors:	SMA Female SMP Female
Mounting:	4-Φ2.7mm through-hole

[1] Exclude connectors.

### Environmental

Operating Temperature:	-35~+75°C
Non-operating Temperature:	-45~+85°C

### Outline Drawings



Unit: mm [in]  
 Tolerance: ±0.5mm [±0.02in]

### How To Order

**QPD2-1000-8000-30-Y**

Y: Connector type

Connector naming rules:

S - SMA Female (Outline A)

P - SMP Female

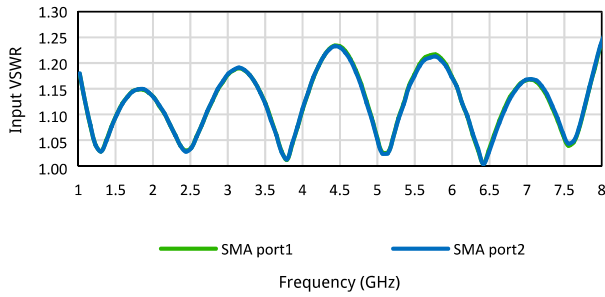
Examples:

To order a 2-way power divider, 1~8GHz, 30W, SMA female, specify QPD2-1000-8000-30-S.

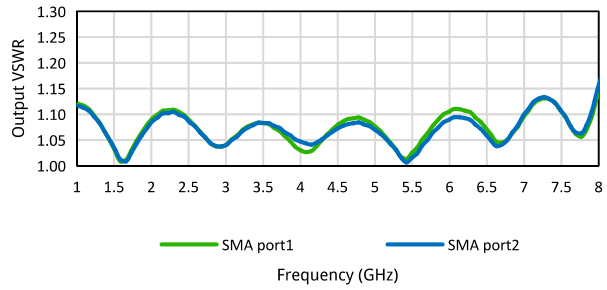
Customization is available upon request.

## Typical Performance Curves

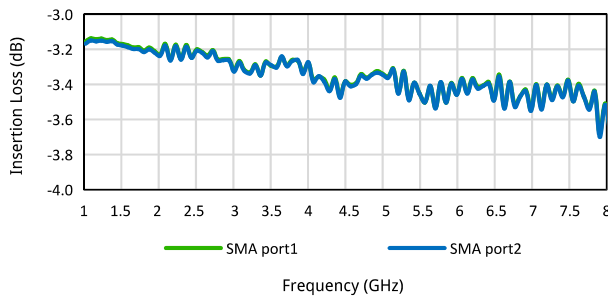
Input VSWR vs. Frequency



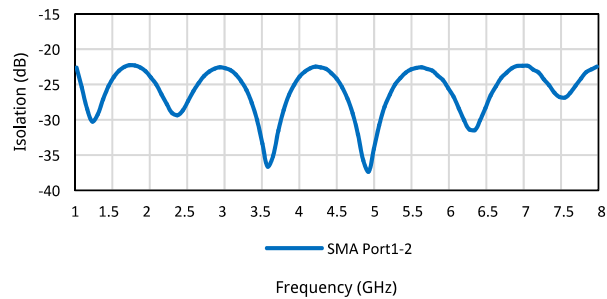
Output VSWR vs. Frequency



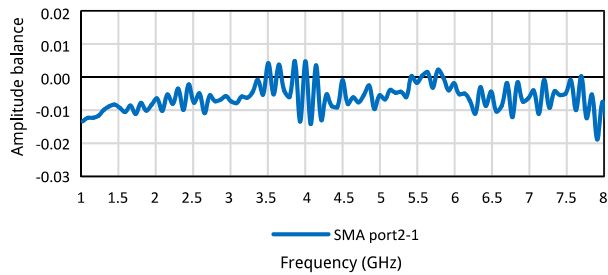
Insertion Loss vs. Frequency



Isolation vs. Frequency



Amplitude balance vs. Frequency



Phase balance vs. Frequency

