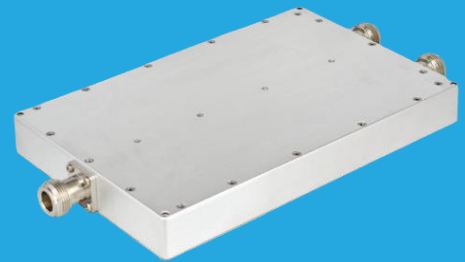


QPD2-100-500-K5-N

2-Way, 0.1~0.5GHz

Features:
 * Small Size
 * Low Insertion Loss

Applications:
 * Amplifiers
 * Mixers
 * Antennas
 * Laboratory Test



Electrical

Frequency:	0.1~0.5GHz
Insertion Loss:	0.3dB max.
Input VSWR:	1.25 max.
Output VSWR:	1.2 max.
Isolation:	20dB min.
Amplitude Balance:	±0.1dB
Phase Balance:	±1°
Impedance:	50Ω
Power @SUM Port:	500W max. as divider 500W max. as combiner

Mechanical

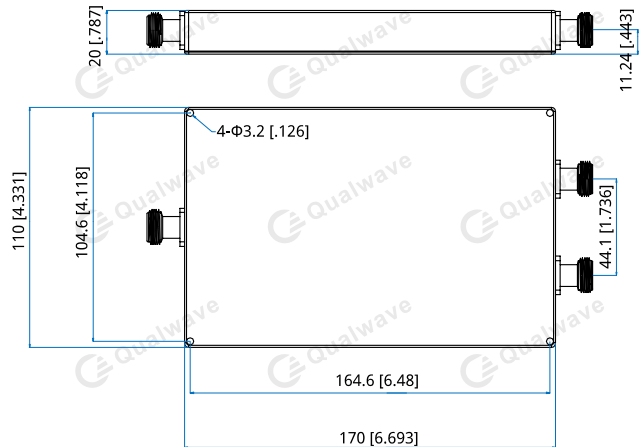
Size ^{*1} :	170*110*20mm 6.693*4.331*0.787in
Connectors:	N Female
Mounting:	4-Φ3.2mm through-hole

[1] Exclude connectors.

Environmental

Operation Temperature: -35~+75°C

Outline Drawings



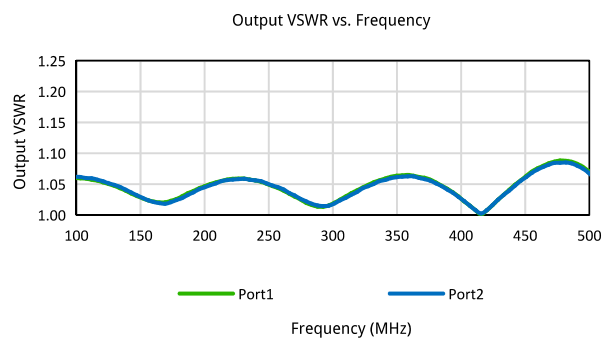
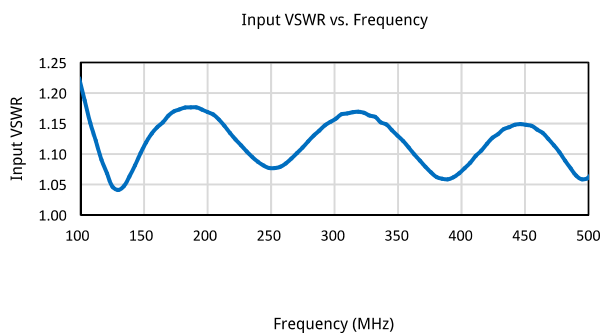
Unit: mm [in]
 Tolerance: ±0.5mm [±0.02in]

How To Order

QPD2-100-500-K5-N

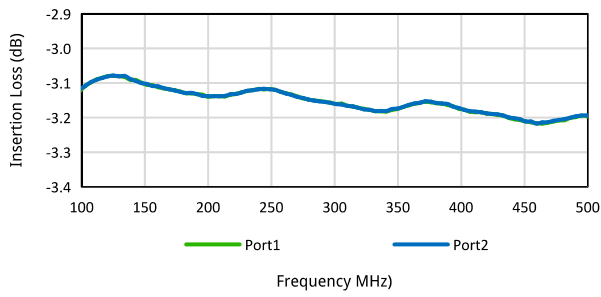
Customization is available upon request.

Typical Performance Curves

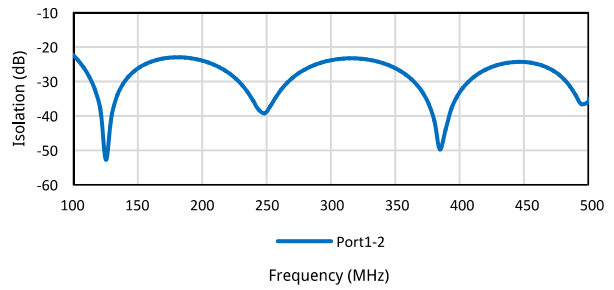


2-Way Power Divider/Combiner

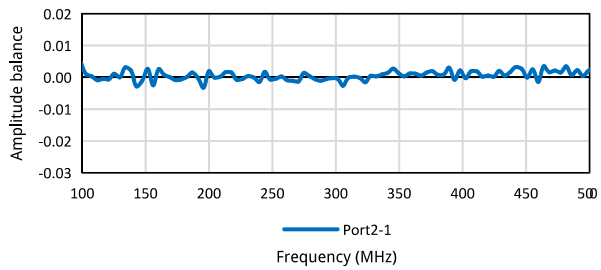
Insertion Loss vs. Frequency



Isolation vs. Frequency



Amplitude balance vs. Frequency



Phase balance vs. Frequency

