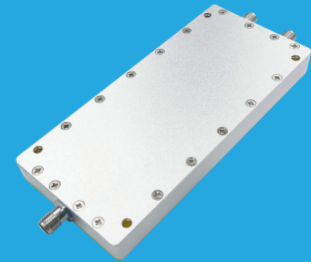


# QPD2-100-3000-30

## 2-Way, 0.1~3GHz

Features:  
 \* Small Size  
 \* Low Insertion Loss

Applications:  
 \* Amplifiers  
 \* Mixers  
 \* Antennas  
 \* Laboratory Test



### Electrical

Frequency:	0.1~3GHz
Insertion Loss:	2.1dB max.
Input VSWR:	1.25 max.
Output VSWR:	1.2 max.
Isolation:	20dB min.
Amplitude Balance:	±0.1dB max.
Phase Balance:	±2°
Impedance:	50Ω
Power @SUM Port:	30W max. as divider 2W max. as combiner

### Mechanical

Size* <sup>1</sup> (SMA):	110*50*11mm 4.331*1.969*0.433in
Connectors* <sup>2</sup> :	SMA Female SMP Male
Mounting:	4-Φ3.2mm through-hole

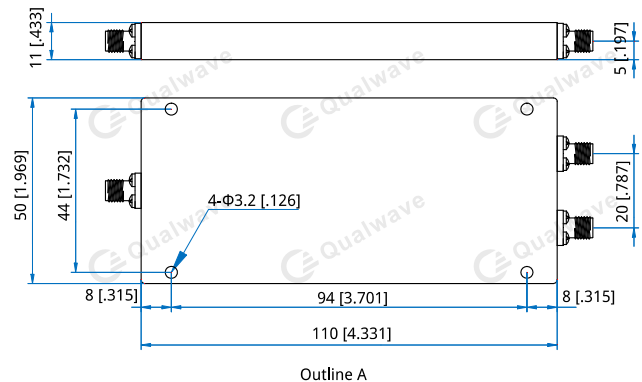
[1] Exclude connectors.

[2] Female connectors can be replaced with male connectors on request.

### Environmental

Operation Temperature:	-45~+85°C
Non-operating Temperature:	-55~125°C

### Outline Drawings



Unit: mm [in]  
 Tolerance: ±0.5mm [±0.02in]

### How To Order

**QPD2-100-3000-30-Y**

Y: Connector type

Connector naming rules:  
 S - SMA Female (Outline A)  
 P - SMP Male

Examples:

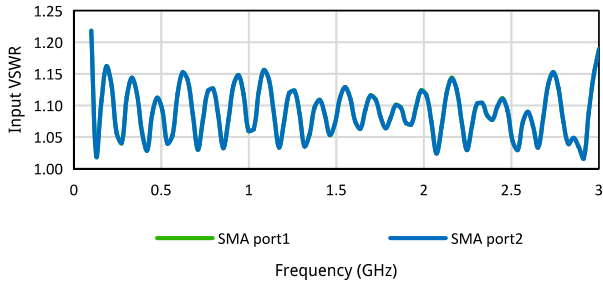
To order a 2-way power divider, 0.1~3GHz, 30W, SMA female, specify QPD2-100-3000-30-S.

Customization is available upon request.

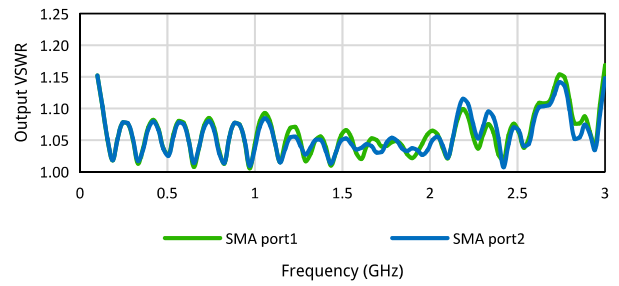
### Typical Performance Curves

#### SMA

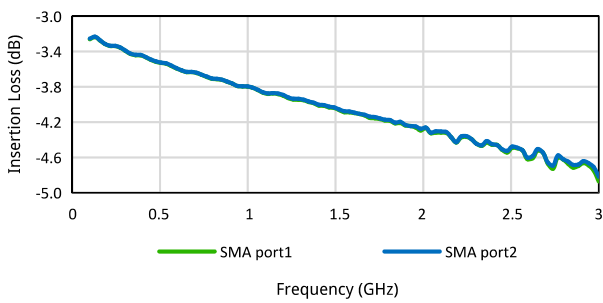
Input VSWR vs. Frequency



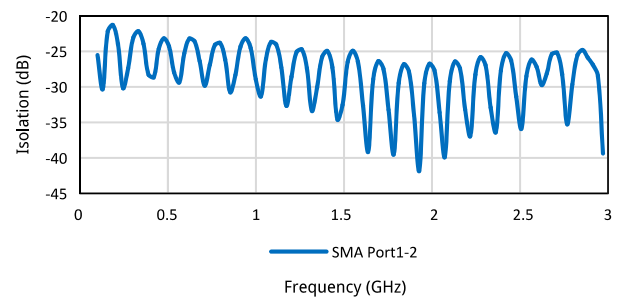
Output VSWR vs. Frequency



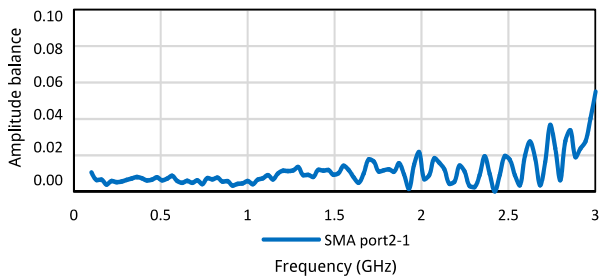
Insertion Loss vs. Frequency



Isolation vs. Frequency



Amplitude balance vs. Frequency



Phase balance vs. Frequency

